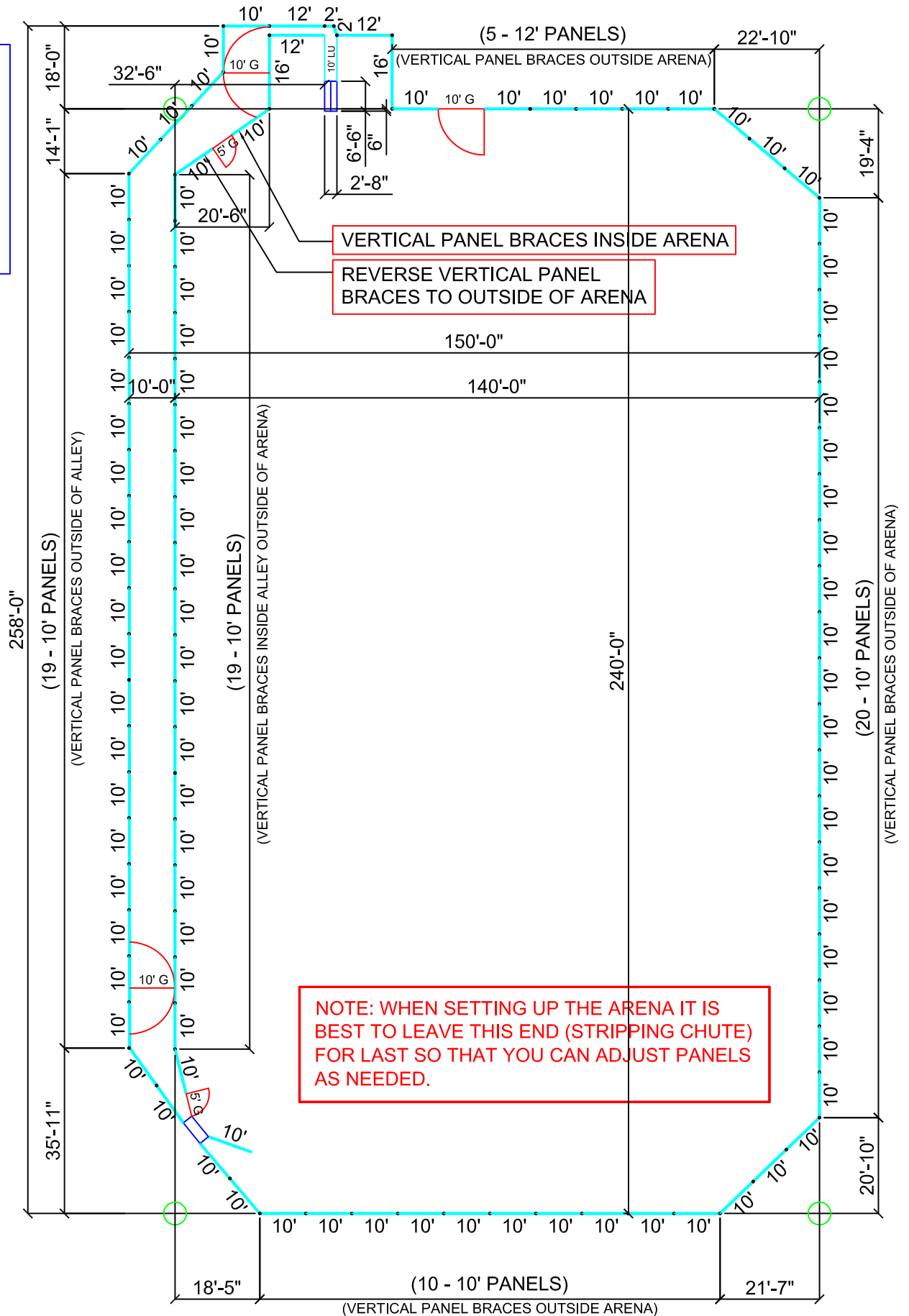


- 93 - 10' Panels
- 3 - 12' Panels
- 2 - 16' Panels
- 2 - 2' Panels
- 3 - 10' Gates
- 2 - 5' Gates
- 1 - Set of Leadups
- 1 - Roping Chute
- 1 - Stripping Chute



NOTE: WHEN SETTING UP THE ARENA IT IS BEST TO LEAVE THIS END (STRIPPING CHUTE) FOR LAST SO THAT YOU CAN ADJUST PANELS AS NEEDED.