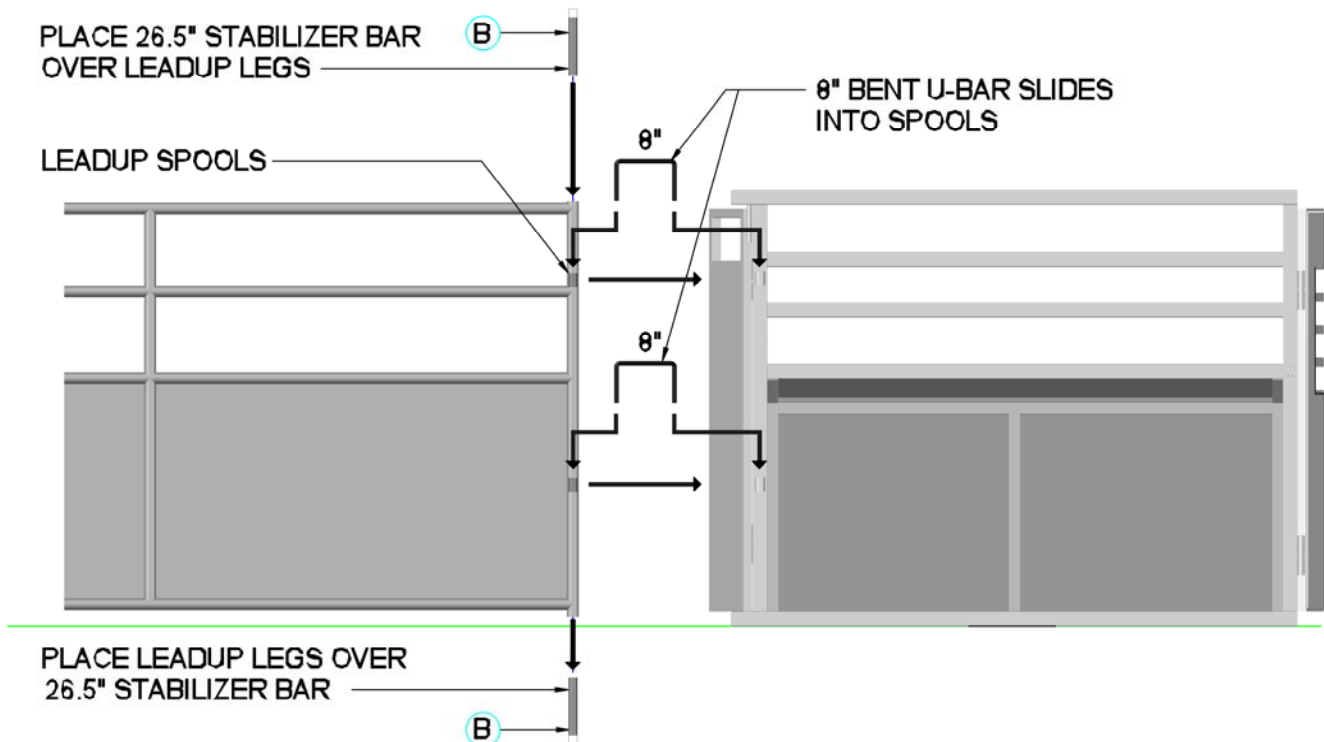


# CHUTE TO LEADUP CONNECTION

- 1.) Place LEADUP Leg over the STABILIZER (B) BAR for support.
- 2.) Slide 5/8" x 8" BENT U-BARS into CHUTE and LEADUP spools.
- 3.) Place 26.5" STABILIZER BAR (B) over top LEADUP Leg for support.

NOTE: ROPING CHUTE LEFT SIDE AND LEADUP PANEL SHOULD LINE UP WITH ONE ANOTHER.



LEADUP PANEL

ROPING CHUTE RIGHT SIDE

STANDING BEHIND THE CHUTE  
LEADUP TO RIGHT SIDE CHUTE CONNECTION w/ 8" U-BARS