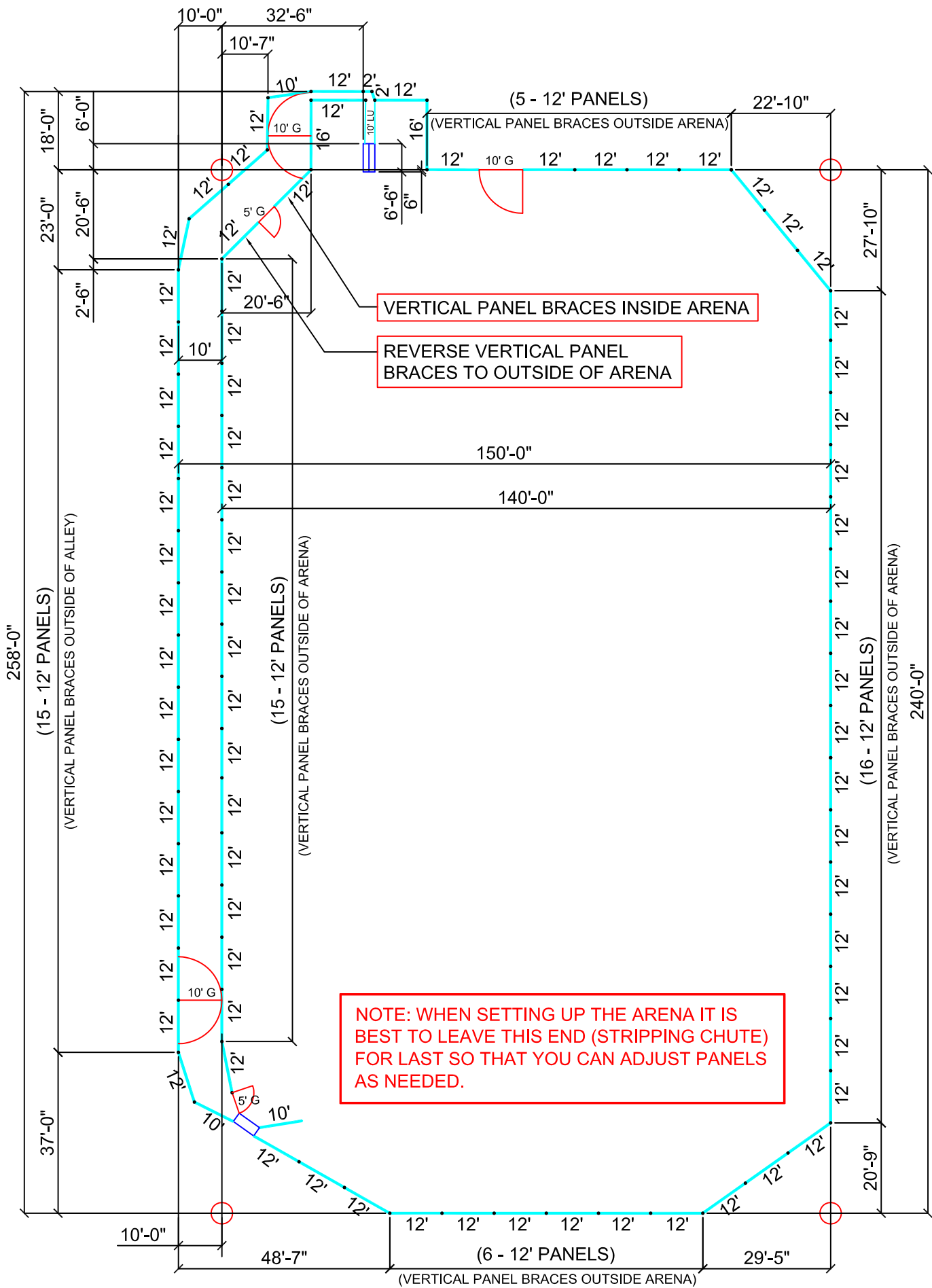


RED RIVER ARENAS.com

“Spend Less, Get More!”

800-343-1026



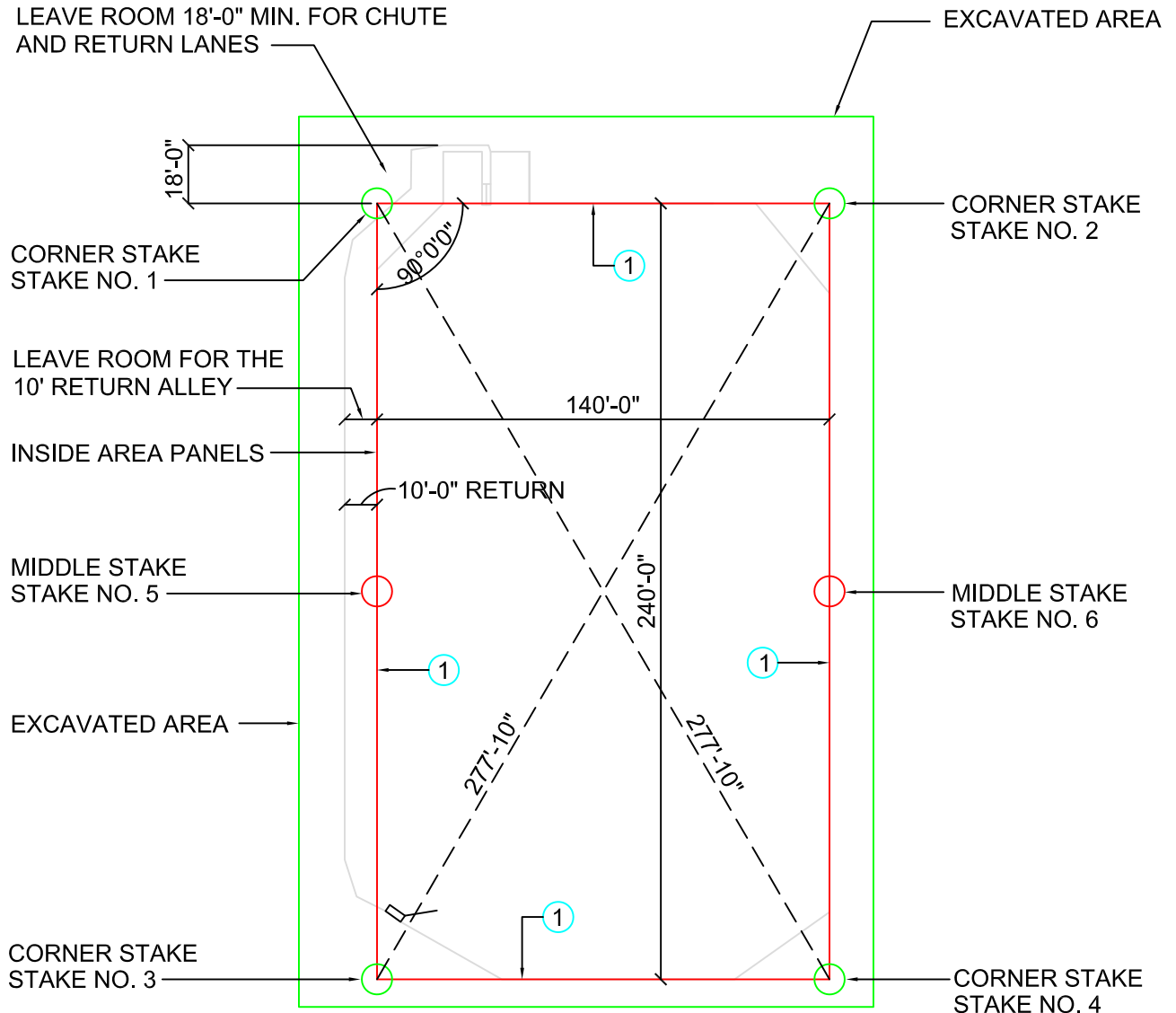
NOTE: WHEN SETTING UP THE ARENA IT IS BEST TO LEAVE THIS END (STRIPPING CHUTE) FOR LAST SO THAT YOU CAN ADJUST PANELS AS NEEDED.

140 X 240 W/RETURN EXCAVATION AREA

MINIMUM EXCAVATION AREA IS 150'-0" BY 258'-0"

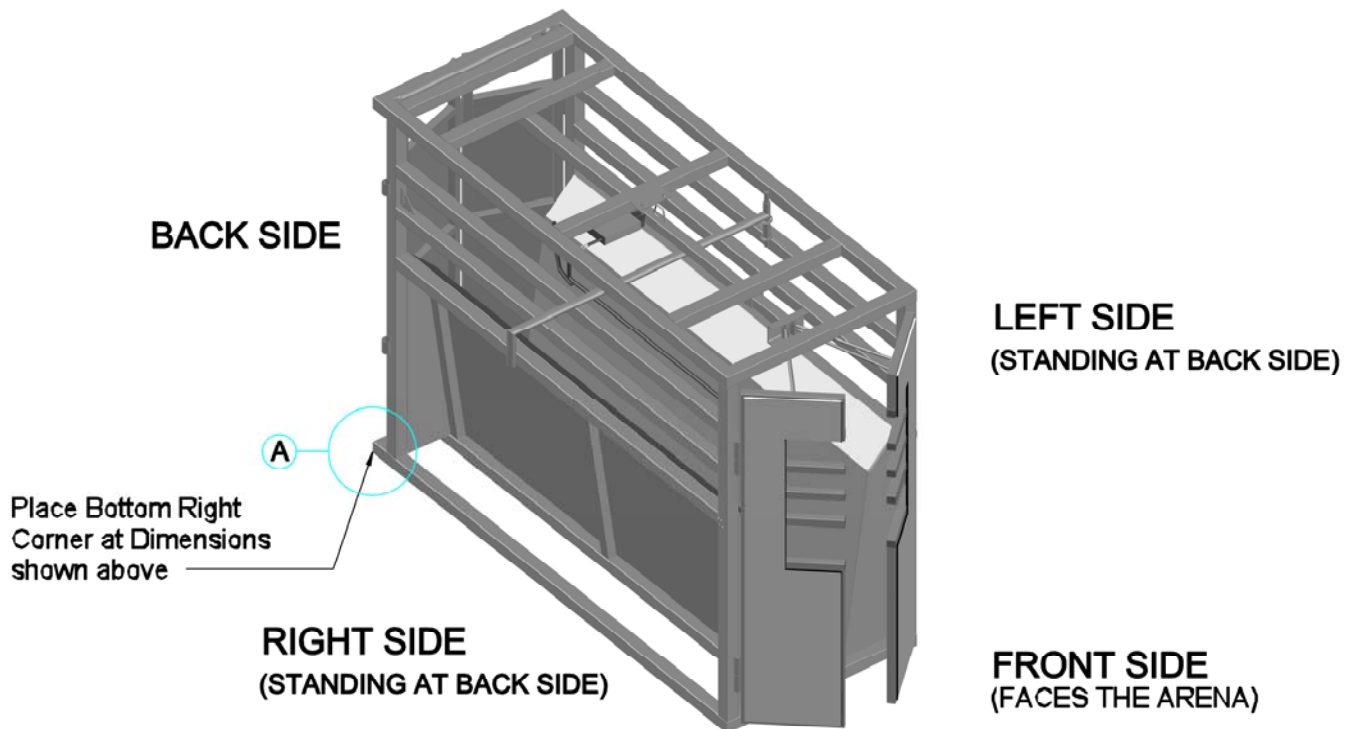
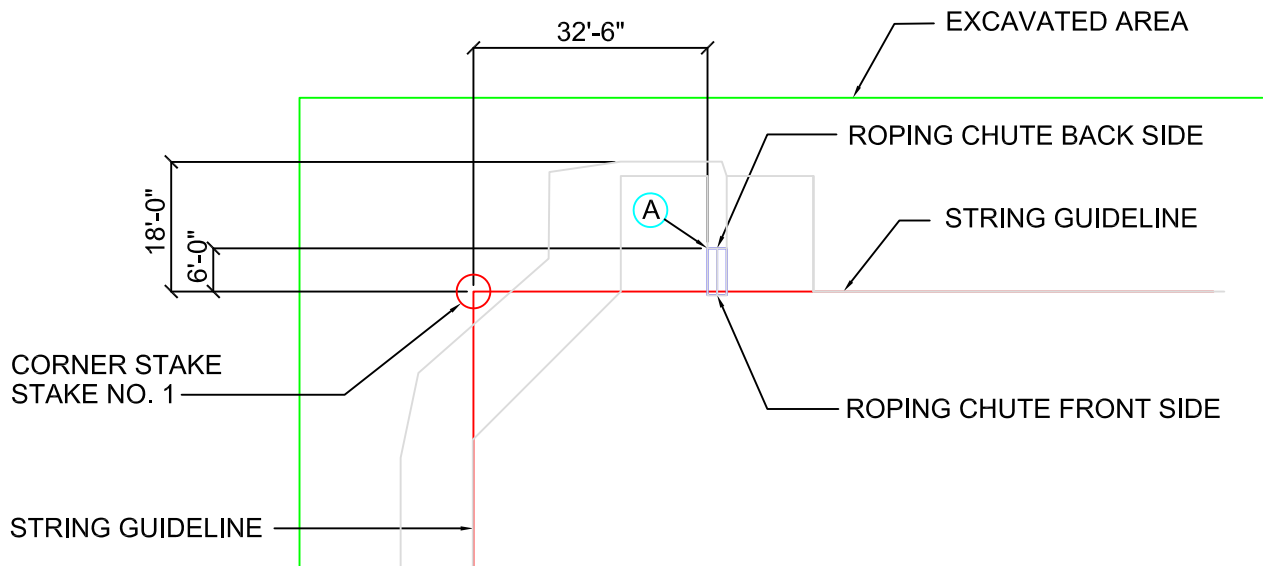
- 1 Start by staking out the Arena Area (140'-0" by 240'-0") to use as a guideline for panels.

NOTE: IF EXCAVATION EXCEEDS THE GIVEN DIMENSIONS OWNER
WILL NEED TO COMPENSATE ACCORDINGLY



140 X 240 w/ RETURN ROPING CHUTE LOCATION

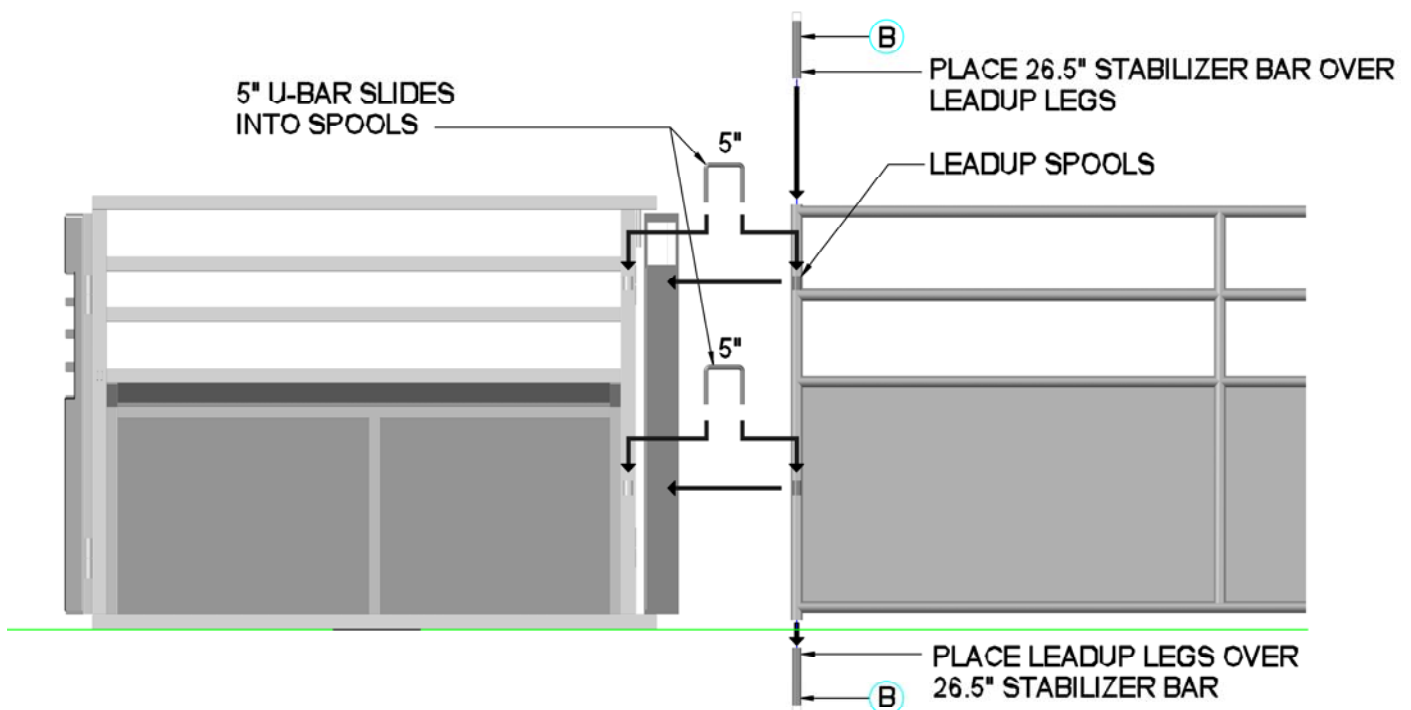
② Position the BACK Corner (A) of the Roping Chute at the dimension shown below:



CHUTE TO LEADUP CONNECTION

- 1.) Place 26.5" STABILIZER BAR (B) on ground and place LEADUP Leg over the STABILIZER BAR for support.
- 2.) Slide 5/8" x 5" U-BARS into CHUTE and LEADUP spools.
- 3.) Place 26.5" STABILIZER BAR (B) over top LEADUP Leg for support.

NOTE: ROPING CHUTE LEFT SIDE AND LEADUP PANEL SHOULD LINE UP WITH ONE ANOTHER.



ROPING CHUTE LEFT SIDE

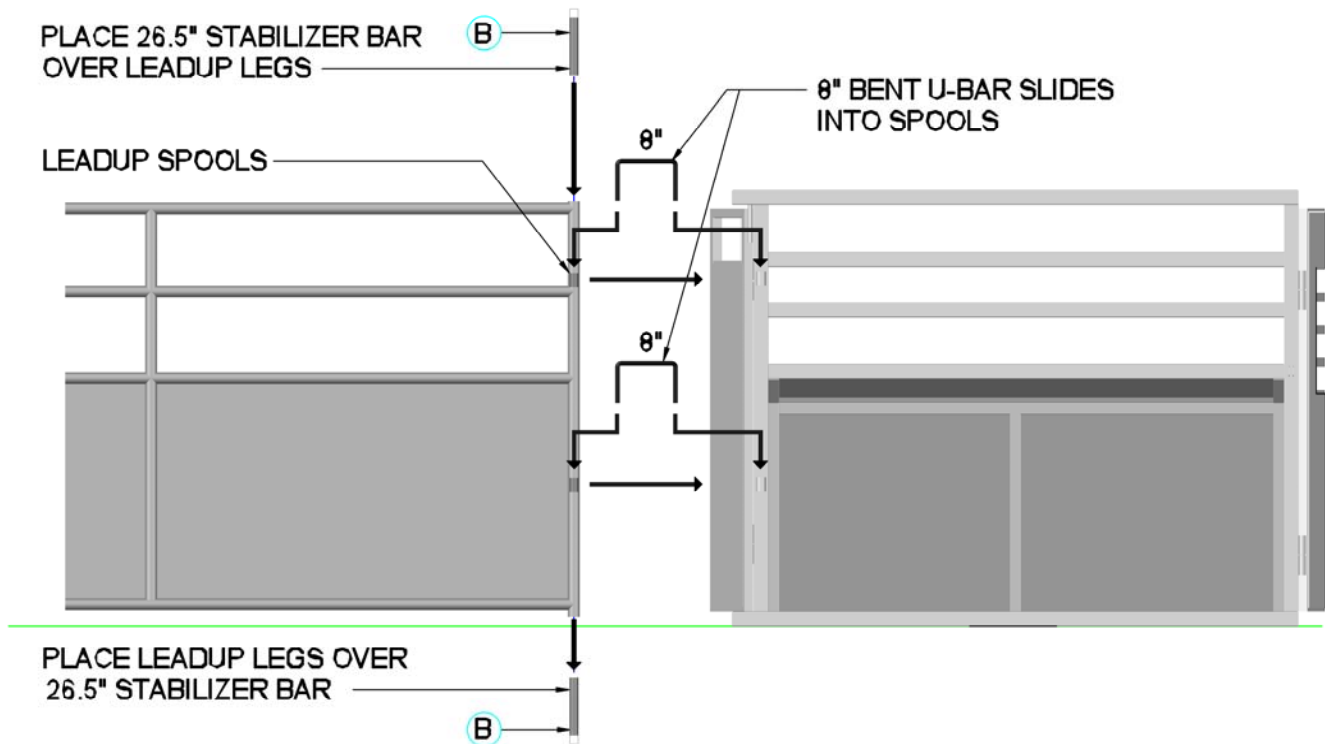
LEADUP PANEL

STANDING BEHIND THE CHUTE
LEADUP TO LEFT SIDE CHUTE CONNECTION w/ 5" U-BARS

CHUTE TO LEADUP CONNECTION

- 1.) Place LEADUP Leg over the STABILIZER (B) BAR for support.
- 2.) Slide 5/8" x 8" BENT U-BARS into CHUTE and LEADUP spools.
- 3.) Place 26.5" STABILIZER BAR (B) over top LEADUP Leg for support.

NOTE: ROPING CHUTE LEFT SIDE AND LEADUP PANEL SHOULD LINE UP WITH ONE ANOTHER.

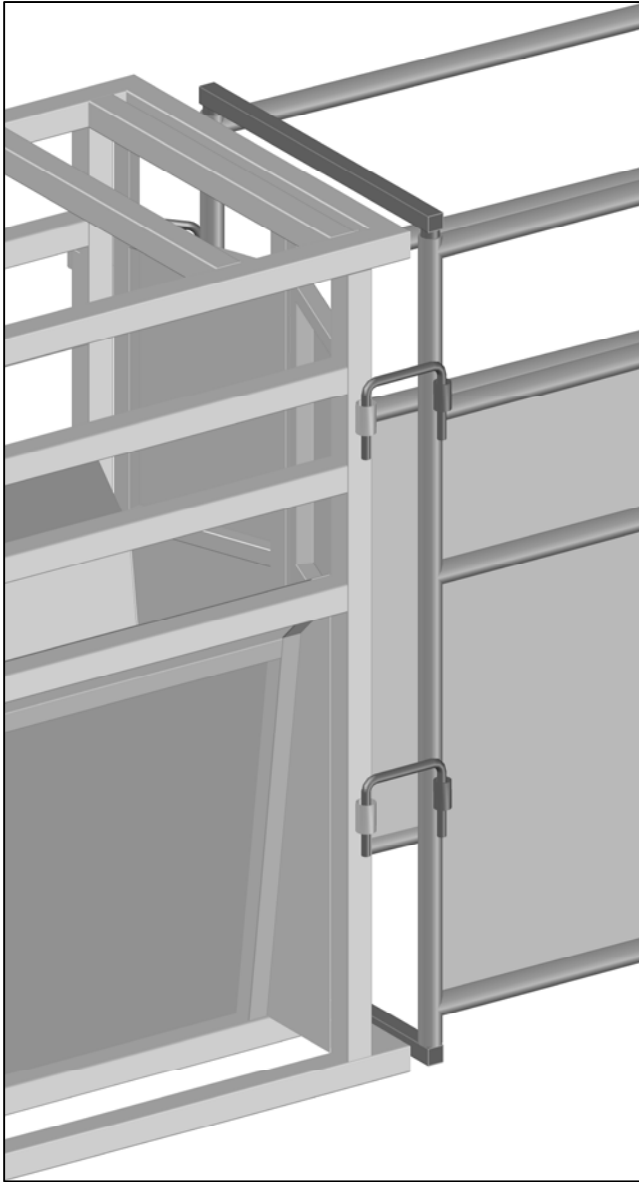


LEADUP PANEL

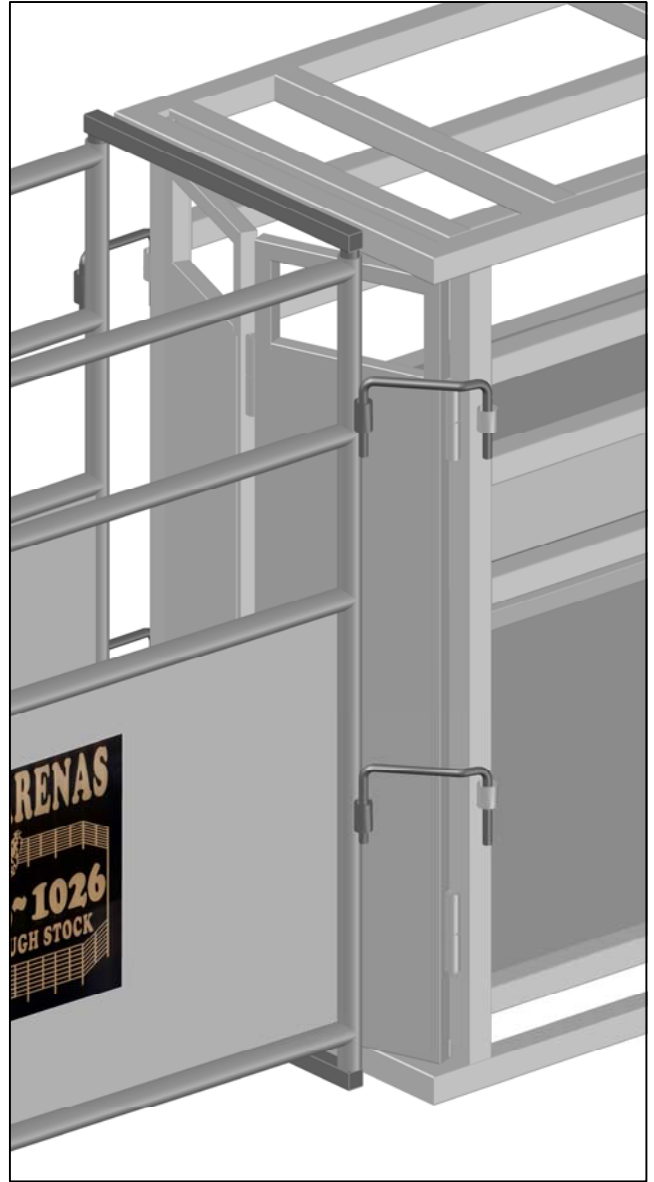
ROPING CHUTE RIGHT SIDE

STANDING BEHIND THE CHUTE
LEADUP TO RIGHT SIDE CHUTE CONNECTION w/ 8" U-BARS

CHUTE TO LEADUP CONNECTION



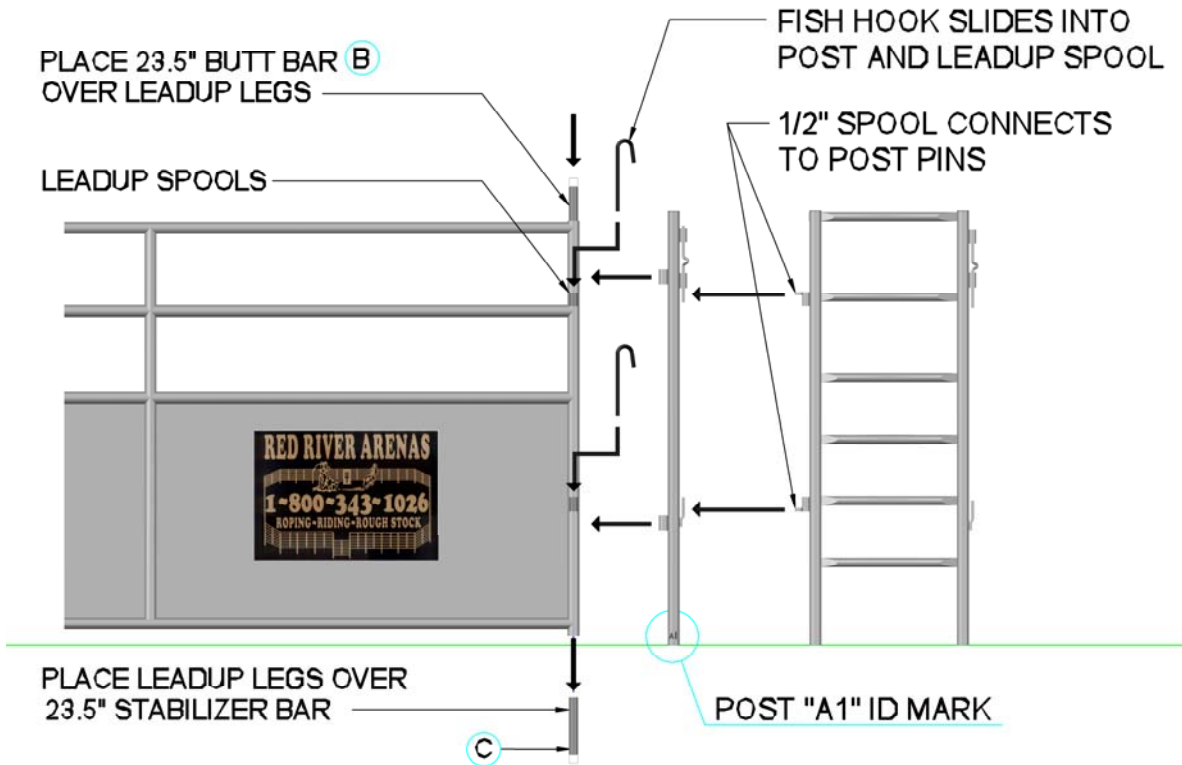
ROPING CHUTE LEFT SIDE
(5/8" x 5" U-BAR)



ROPING CHUTE RIGHT SIDE
(5/8" x 8" BENT U-BAR)

STANDING BEHIND CHUTE
LEFT AND RIGHT CHUTE TO LEADUP U-BAR CONNECTIONS

LEADUP TO 2' FT PANEL CONNECTION (ROPING CHUTE LEFT SIDE)

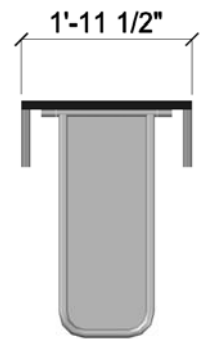


LEADUP PANEL

POST A1

2 FT. PANEL

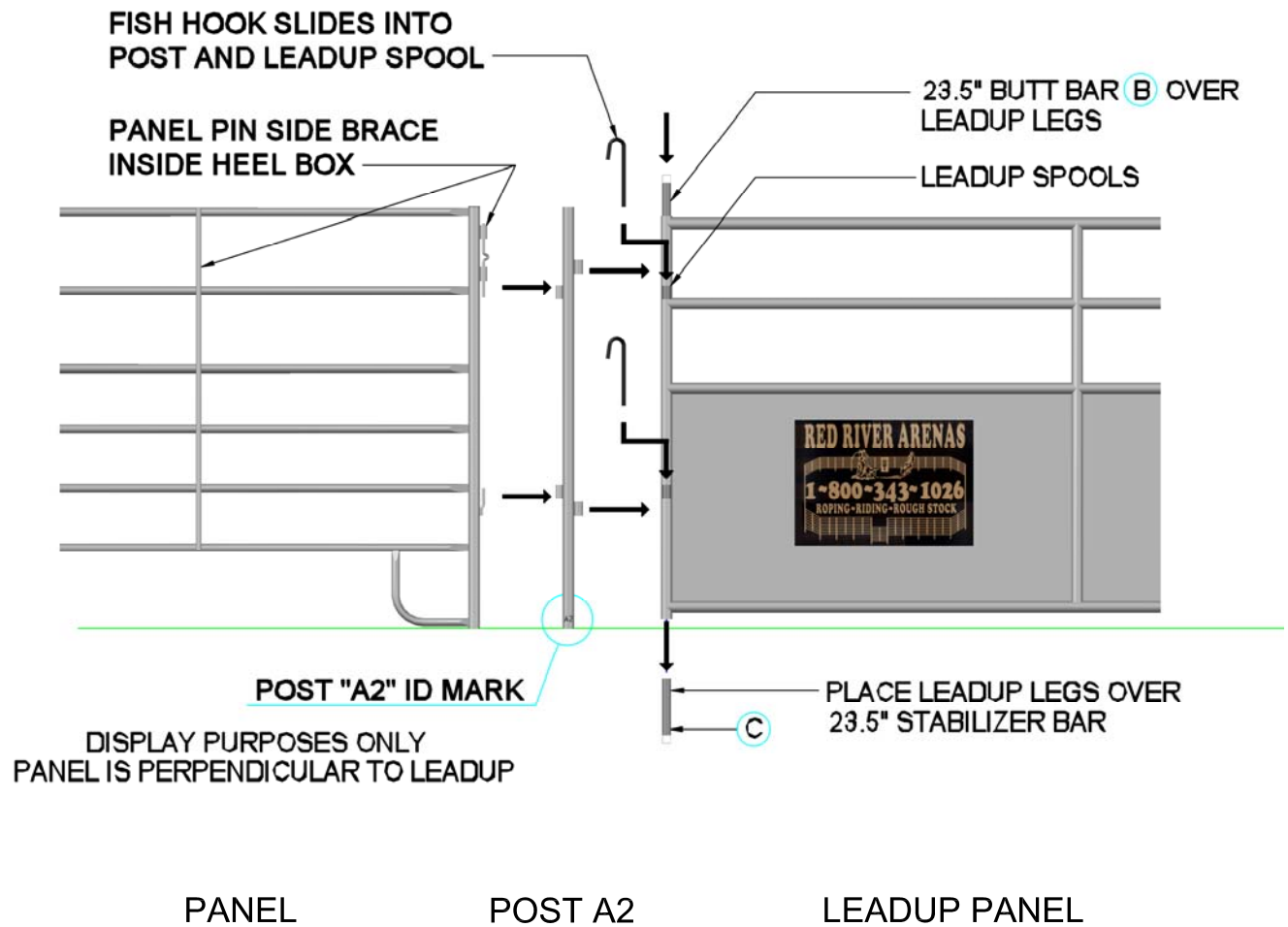
STANDING BEHIND CHUTE
LEFT SIDE LEADUP TO PANEL CONNECTION



(B) 23.5" BUTT BAR



LEADUP TO PANEL CONNECTION (ROPING CHUTE RIGHT SIDE)



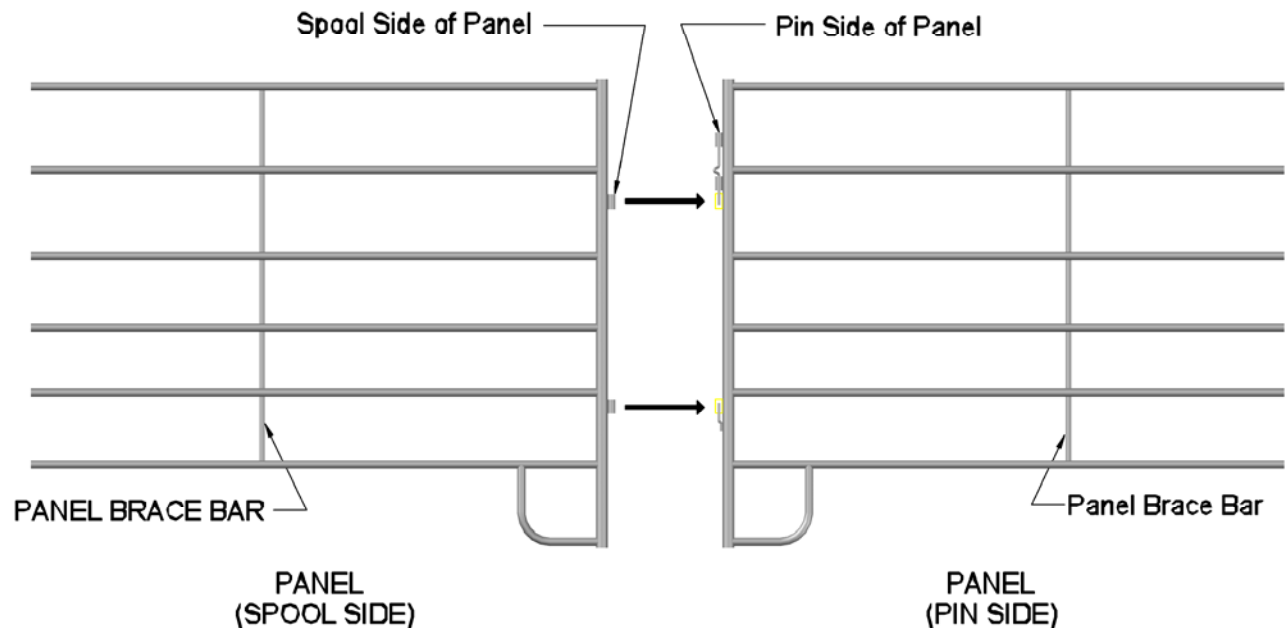
STANDING BEHIND CHUTE
RIGHT SIDE LEADUP TO PANEL CONNECTION

PANEL TO PANEL CONNECTION

(SPOOL TO PIN)

SPOOL TO PIN PANEL CONNECTION

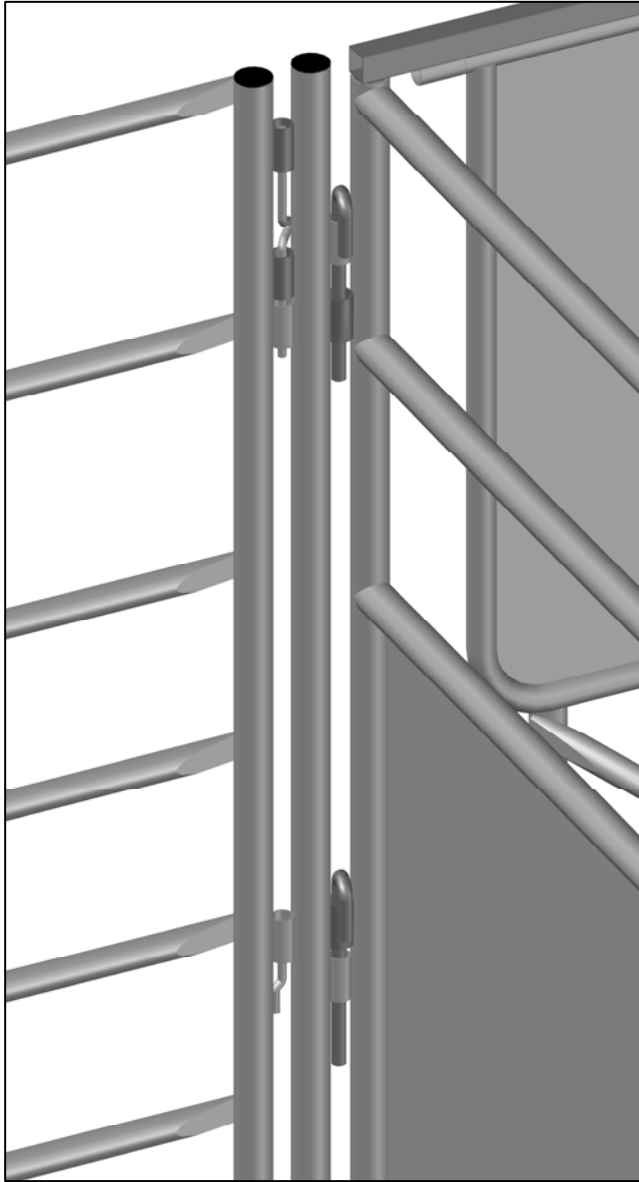
1. SLIGHTLY TILT UNCONNECTED PANEL AND PLACE BOTTOM SPOOL OVER OTHER PANELS BOTTOM PIN.
2. LIFT TOP PIN AND POSITION PANEL SPOOL UNDER PIN SIDE AND RELEASE PIN.
3. PANL SHOULD NOW BE CONNECTED. YOU CAN ADJUST ONE PANEL 90° FOR BALANCE.



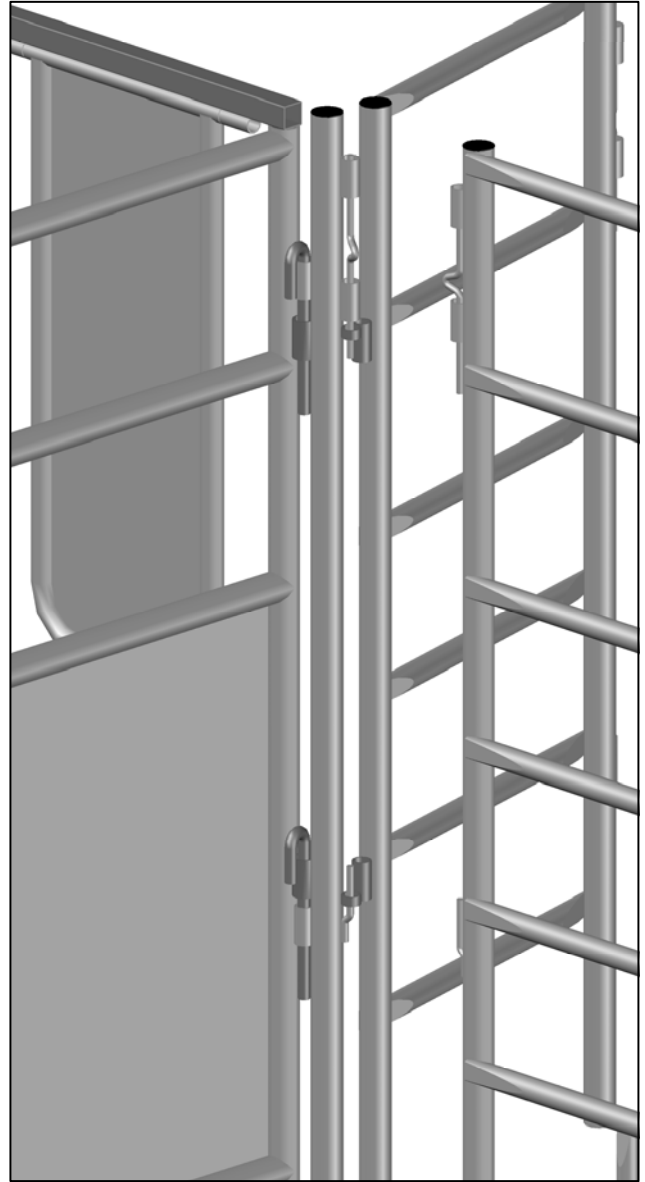
NOTE: WHEN PLACING PANELS - THE PANEL BRACE BAR FACES OUTSIDE OF THE ARENA AREA

SPOOL TO PIN PANEL TO PANEL CONNECTION

LEADUP TO PANEL CONNECTION



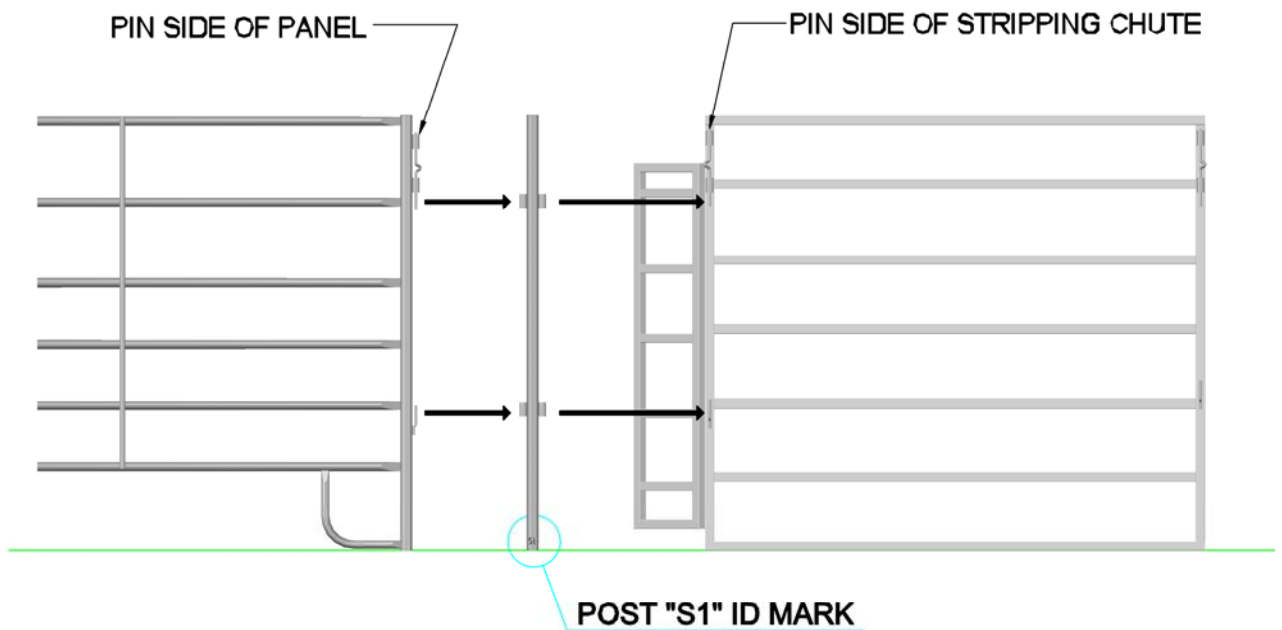
LEFT SIDE LEADUP TO PANEL CONNECTION USING POST A1



RIGHT SIDE LEADUP TO PANEL CONNECTION USING POST A2

STANDING BEHIND CHUTE
LEFT AND RIGHT LEADUP TO PANEL CONNECTIONS

PANEL TO STRIPPING CHUTE CONNECTION w/ POST S1



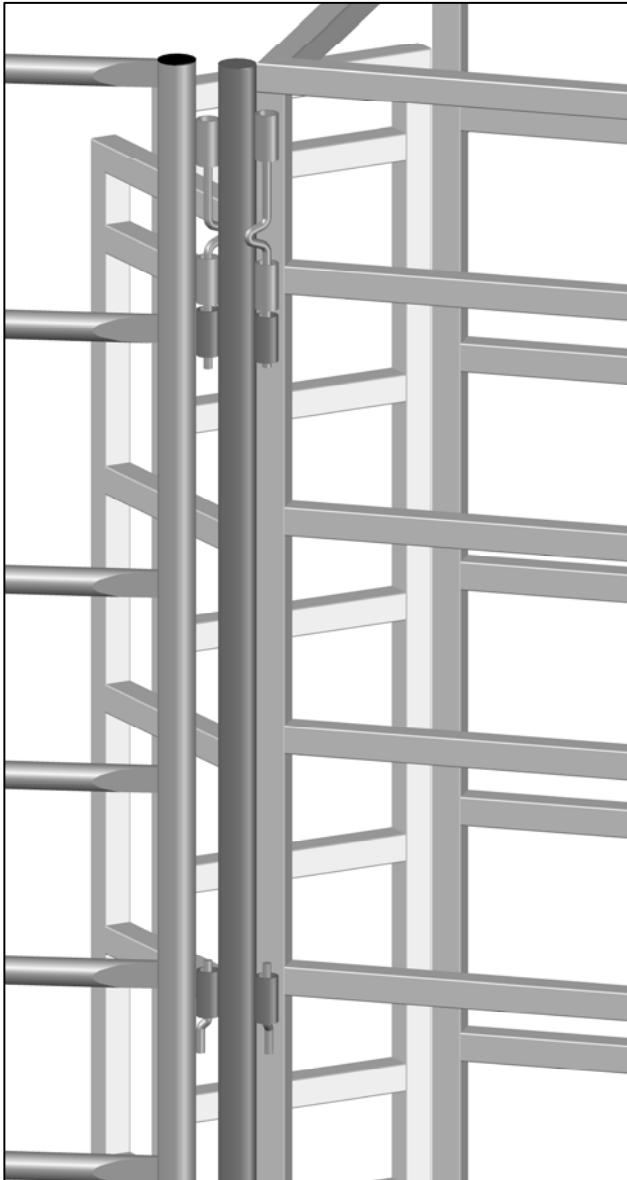
PANEL
(PIN SIDE)

POST S1

STRIPPING CHUTE

PANEL TO STRIPPING CHUTE CONNECTION w/ POST S1

PANEL TO STRIPPING CHUTE CONNECTION w/ POST S1



PANEL TO FRONT OF STRIPPING
CHUTE USING POST S1



PANEL TO REAR OF STRIPPING
CHUTE (PIN TO SPOOL)

PANEL TO STRIPPING CHUTE CONNECTIONS