

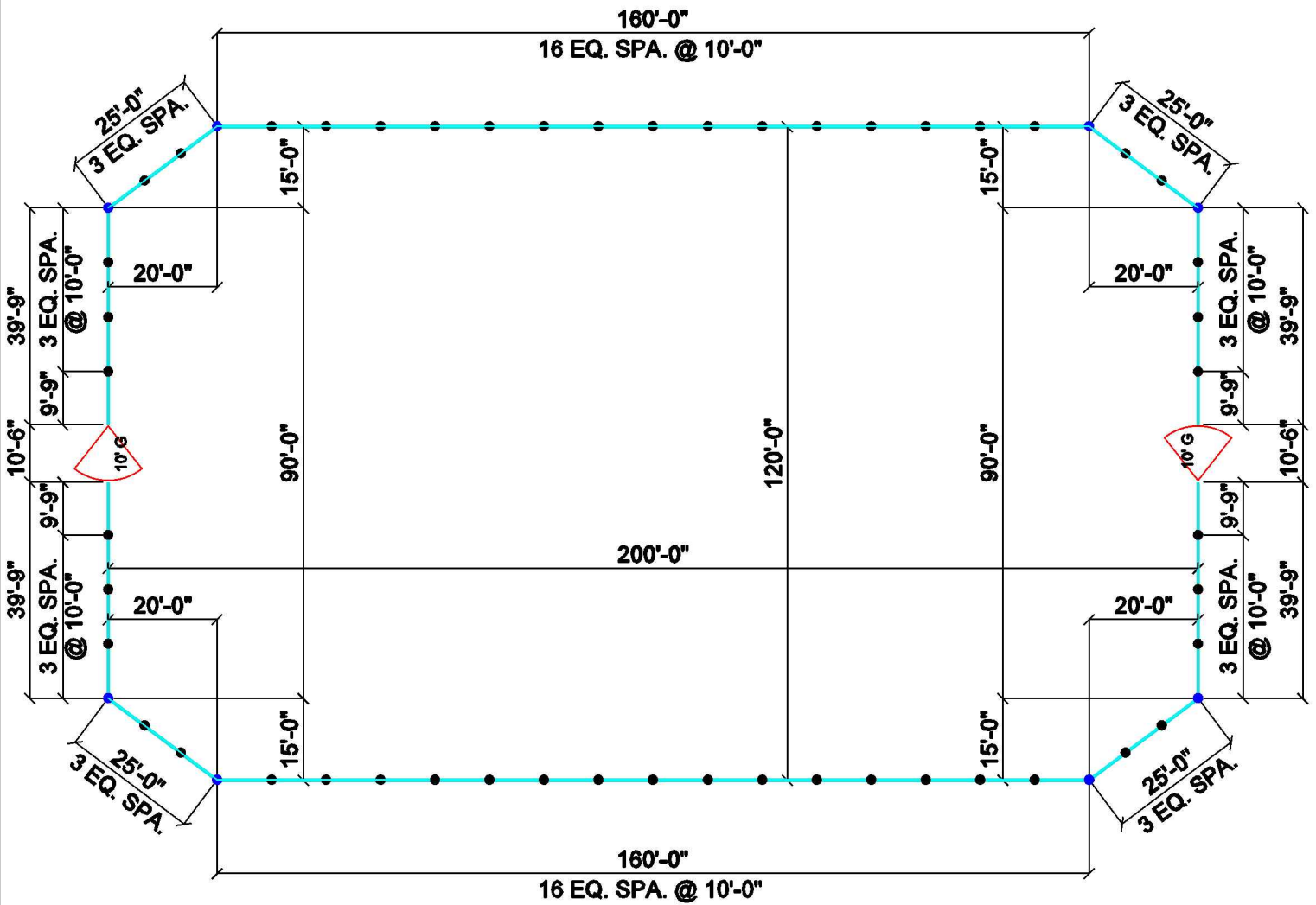


***RED RIVER ARENAS.com***

***“Spend Less, Get More!”***

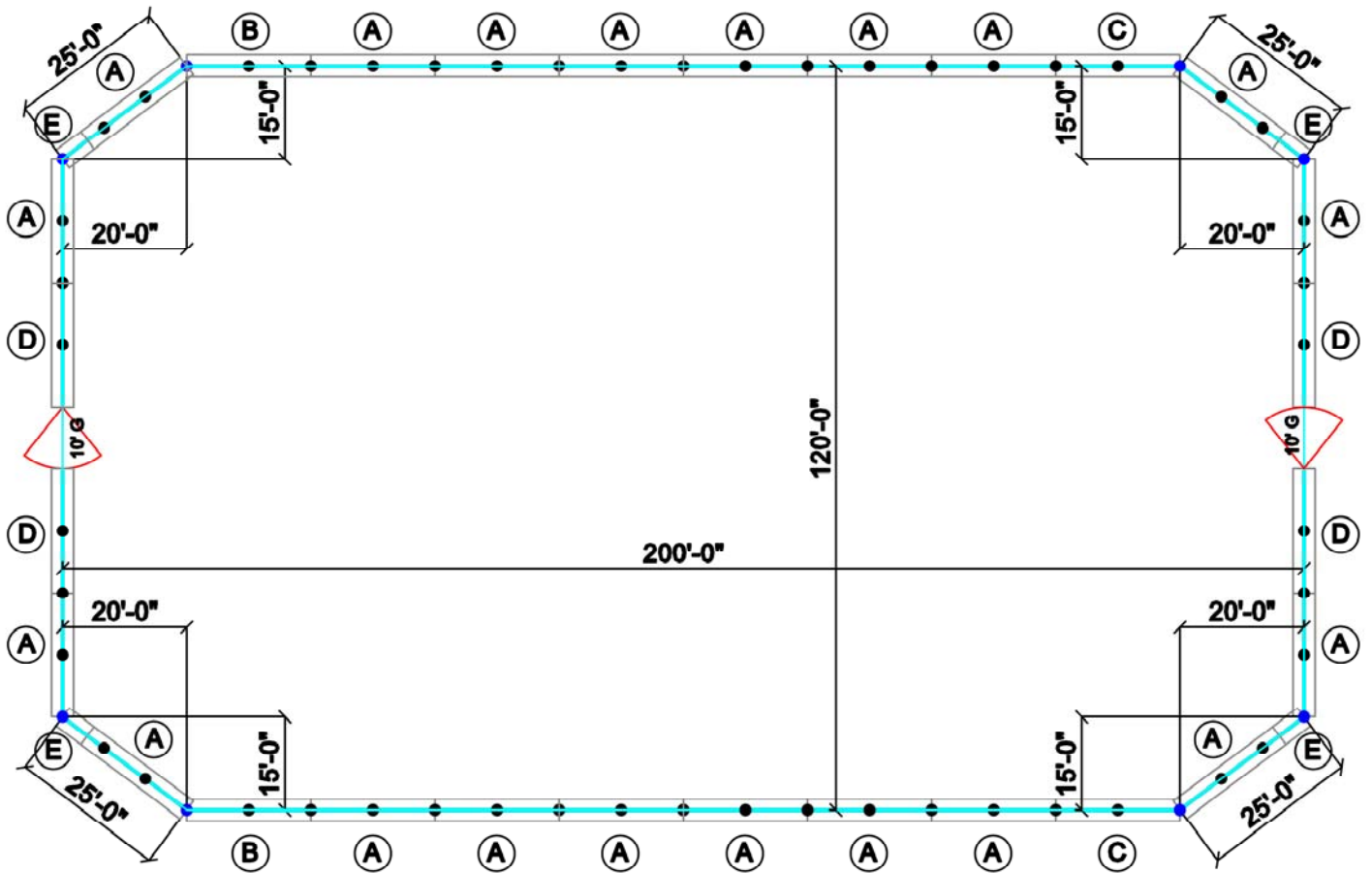
***800-343-1026***

# 120 X 200 RIDING ARENA DIMENSION LAYOUT



# 120 X 200 RIDING ARENA PIPE LENGTH LOCATIONS

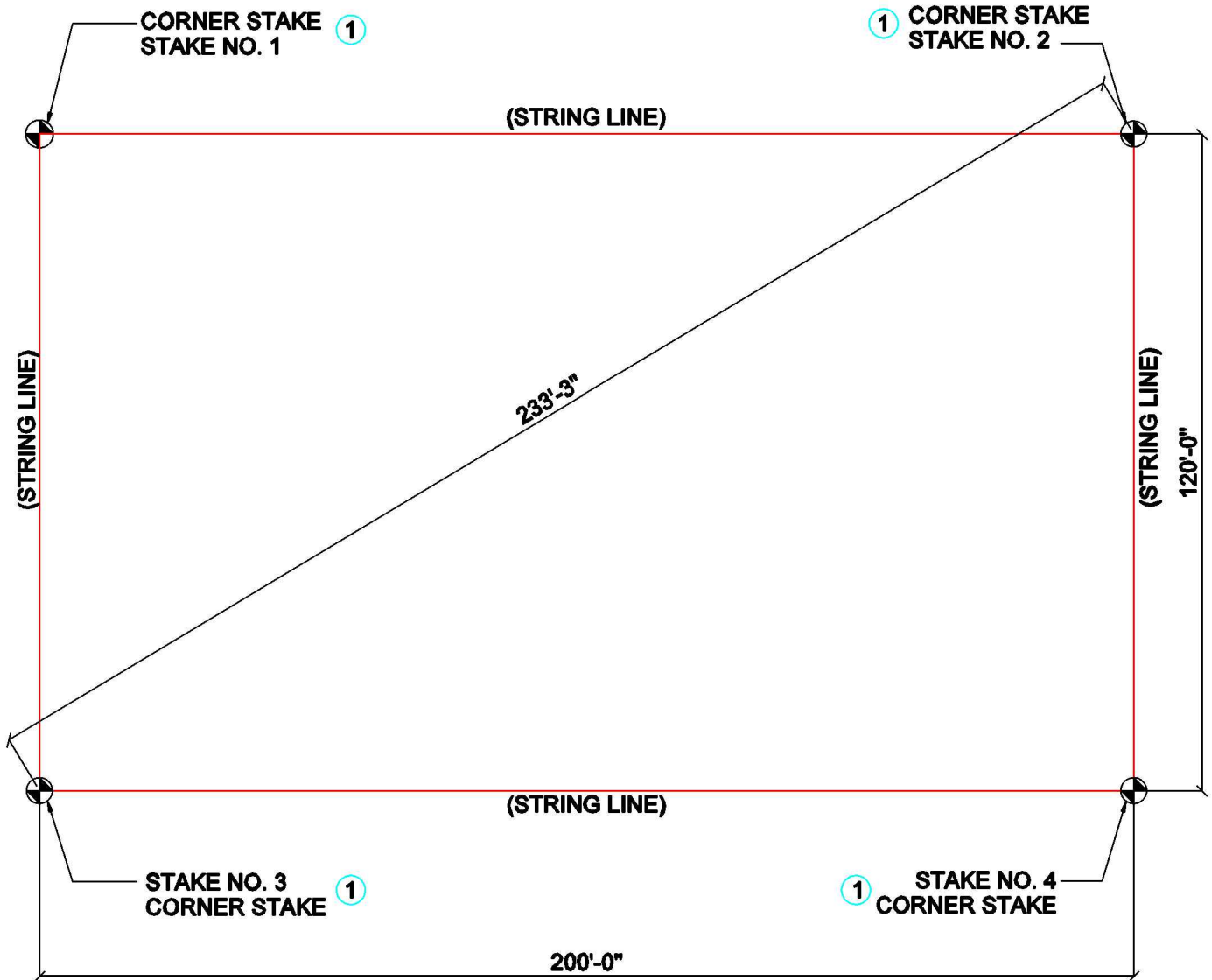
- (A) 20'-6" (includes swedge)
- (B) 20'-3" (includes swedge)
- (C) 19'-9" (no swedge) Measure before cutting.
- (D) 19'-6" (no swedge) Measure before cutting.
- (E) 4'-6" (no swedge) Measure before cutting.



# 120 X 200 RIDING ARENA EXCAVATION AREA

MINIMUM EXCAVATION AREA IS 120'-0" BY 200'-0"

- 1 Start by staking out the Arena Area (120'-0" by 200'-0") using a string line.



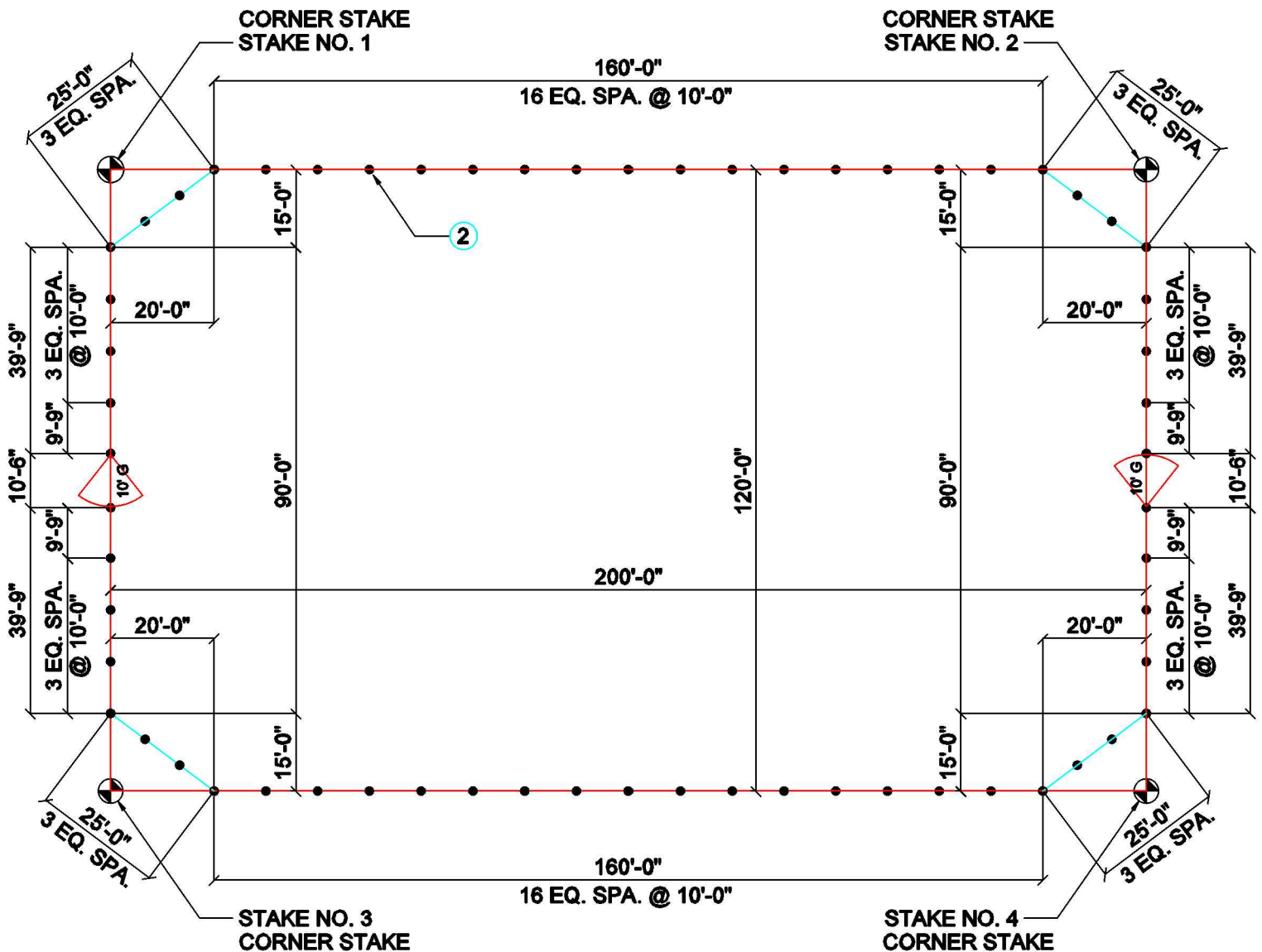
## EXCAVATION AREA

# 120 X 200 RIDING ARENA

## POST LOCATIONS

(PLACE A FLAG FOR EACH POST ALONG THE STRING LINE)

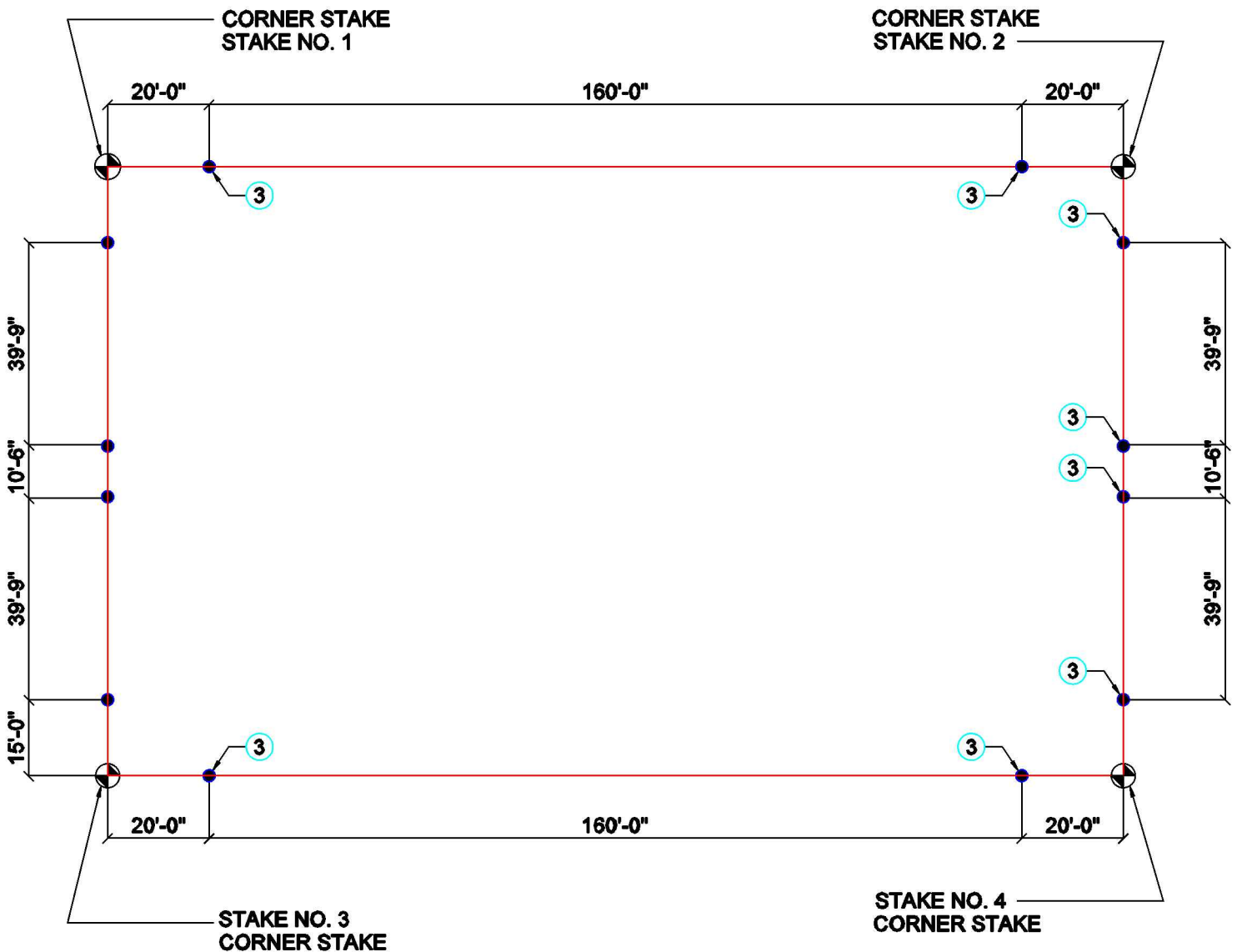
- Using the Dimension Layout. Use flags or stakes to locate drill locations for all posts. Once you have all your post flags staked out, begin drilling the holes. (Posts should be at a min. of 2'-6" below grade.)



# 120 X 200 RIDING ARENA SETTING POSTS W/ NO HOLES

(SET AND CONCRETE ONLY THE POSTS WITH NO HOLES AT THIS TIME)

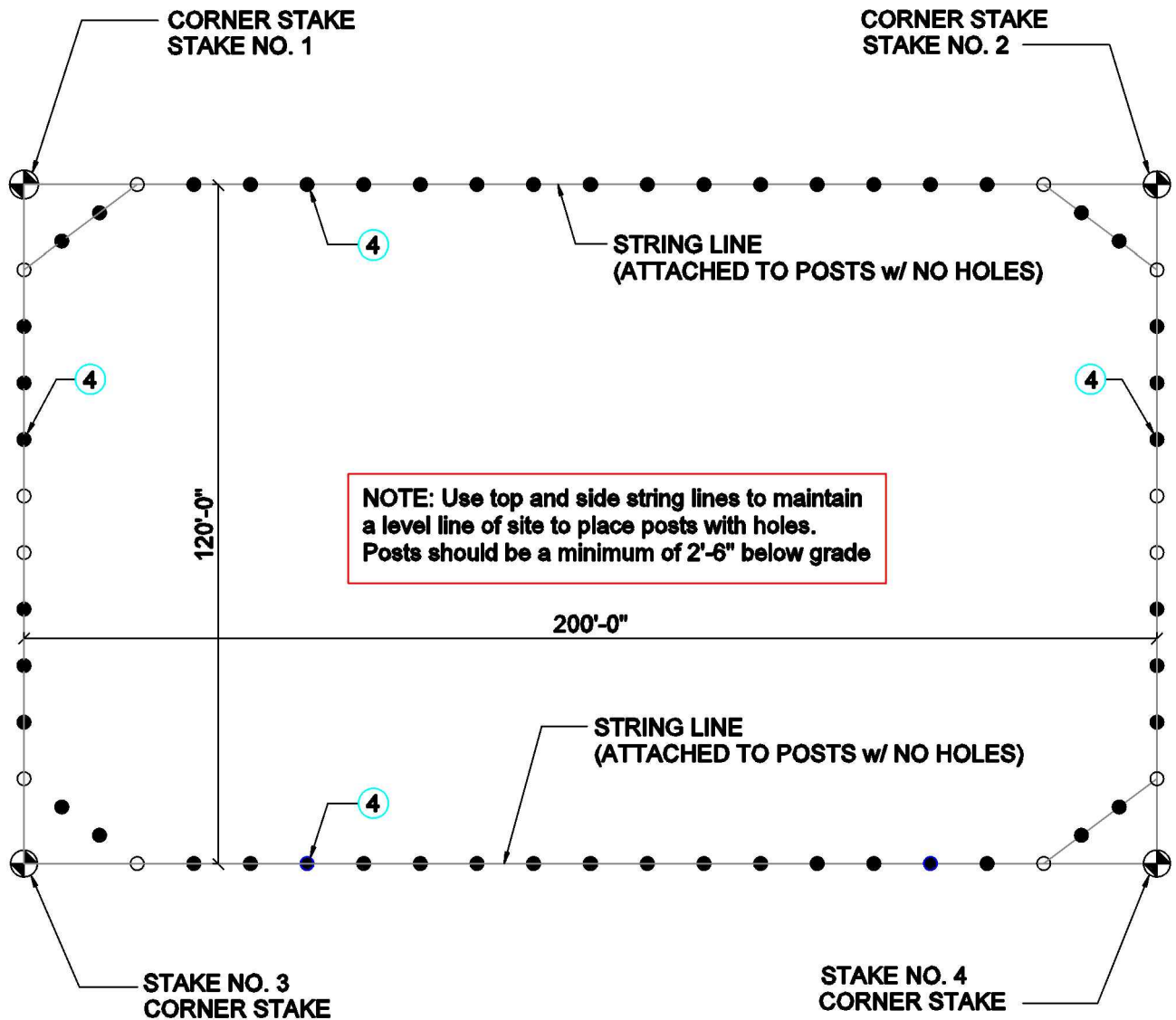
- ③ Place and concrete only the posts with no holes at this time. Once you have all your post flags staked out, begin drilling the holes. (Posts should be set at a min. of 2'-6" below grade.)



# 120 X 200 RIDING ARENA SETTING POSTS WITH HOLES

(Use String Lines in order to maintain a level line of site to place posts with holes)  
(Posts should be at a min. of 2'-6" below grade.)

- 4 With Drill holes already done. Use String Lines to maintain a level line of site to place posts.  
(See Next Page)

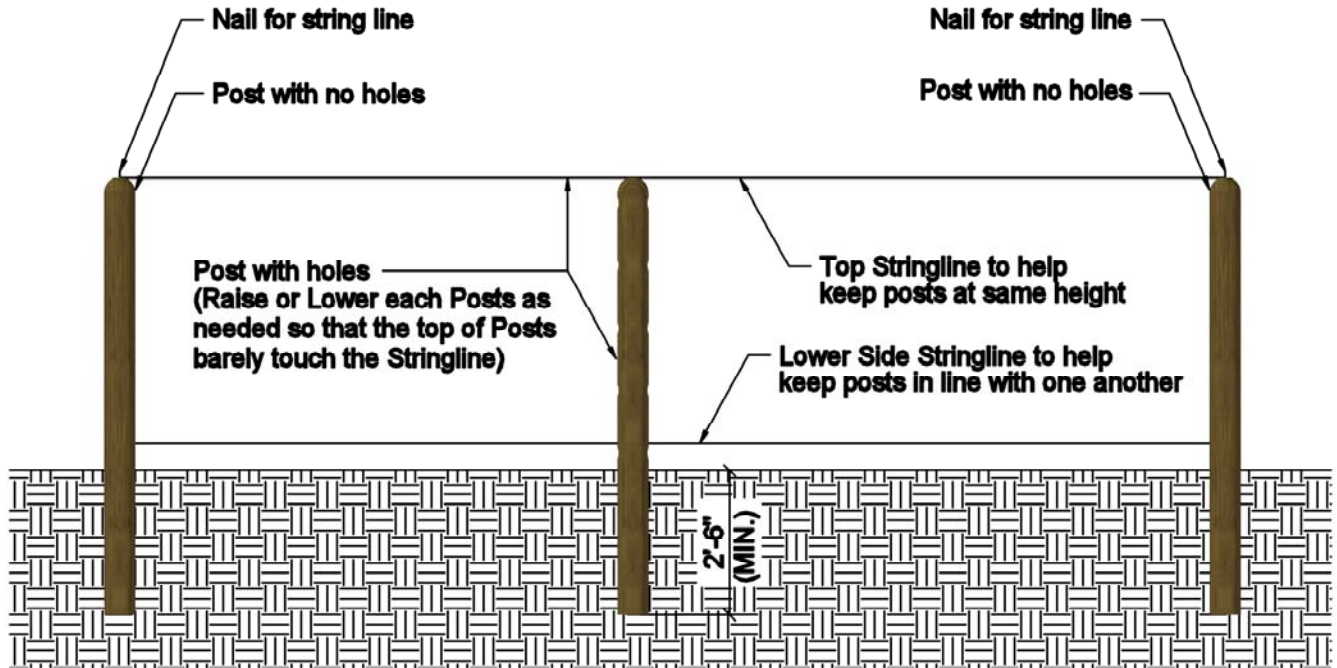




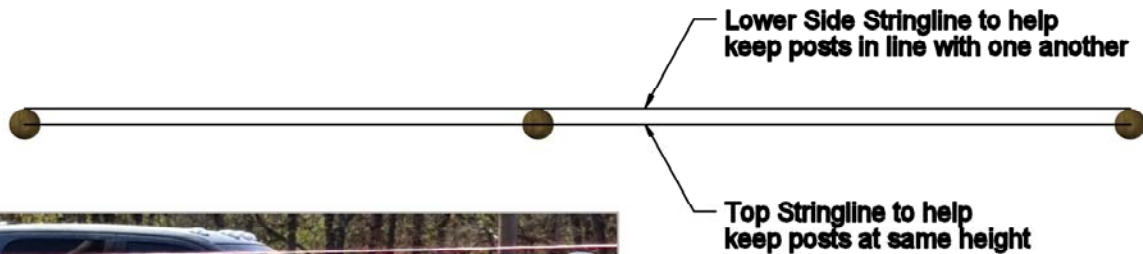
# SETTING POSTS W/ HOLES

(Use String Lines in order to maintain a level line of site to place posts with holes)

(Posts should be at a min. of 2'-6" below grade.)



## SIDE VIEW



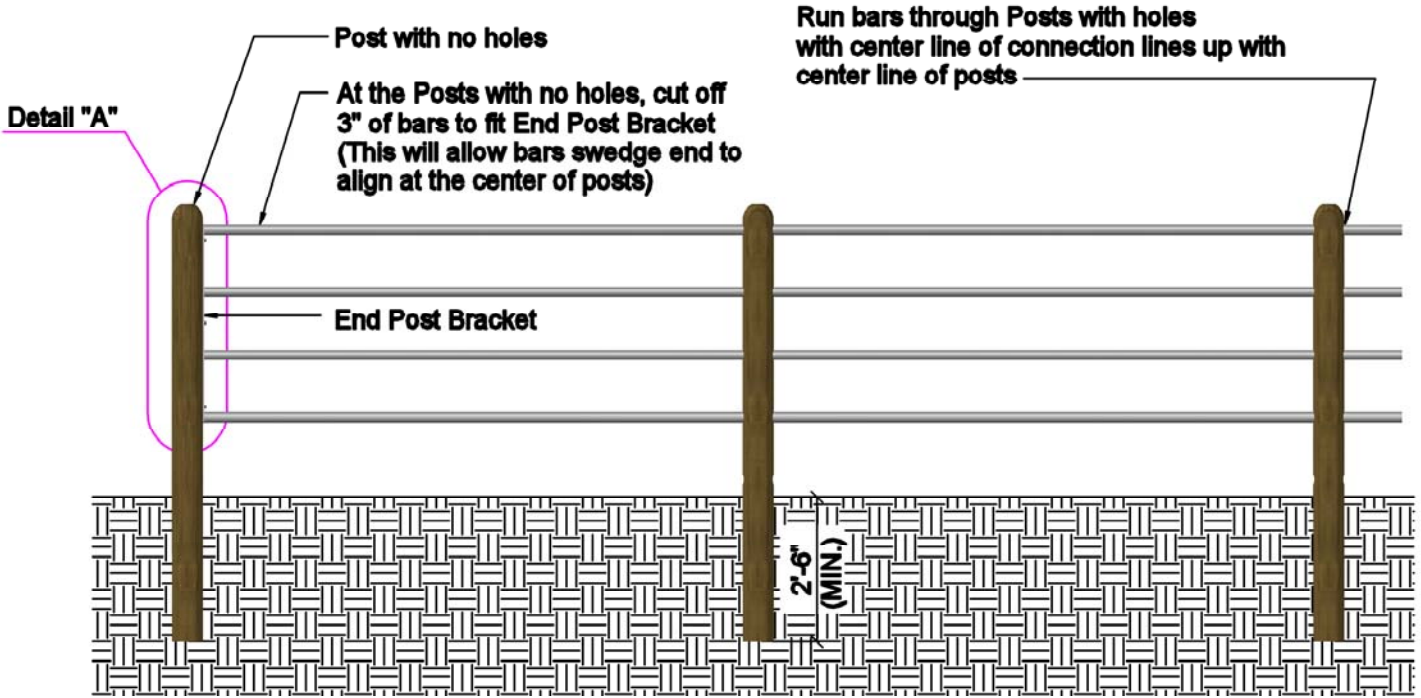
## TOP VIEW



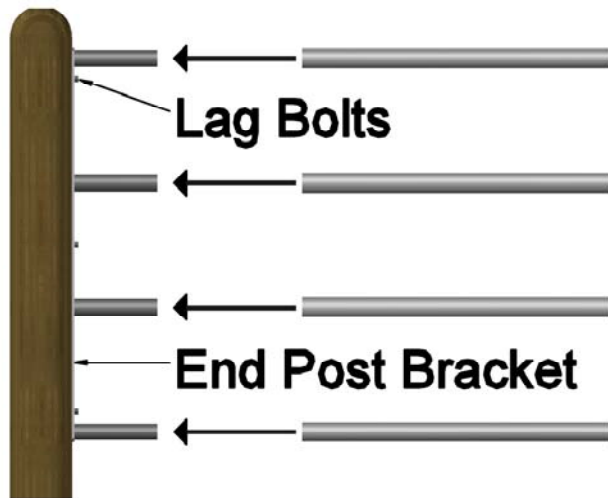


# RUNNING BARS THROUGH POSTS

( Use String Lines in order to maintain a level line of site to place posts with holes )



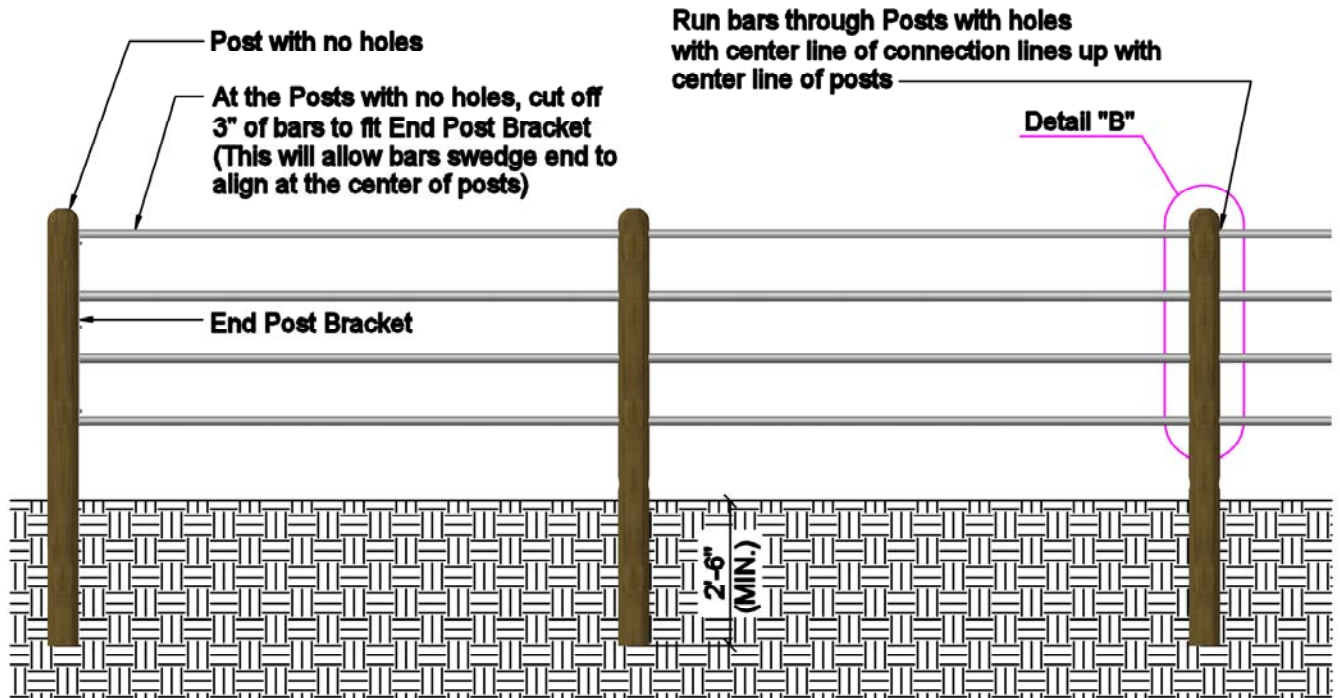
## SIDE VIEW



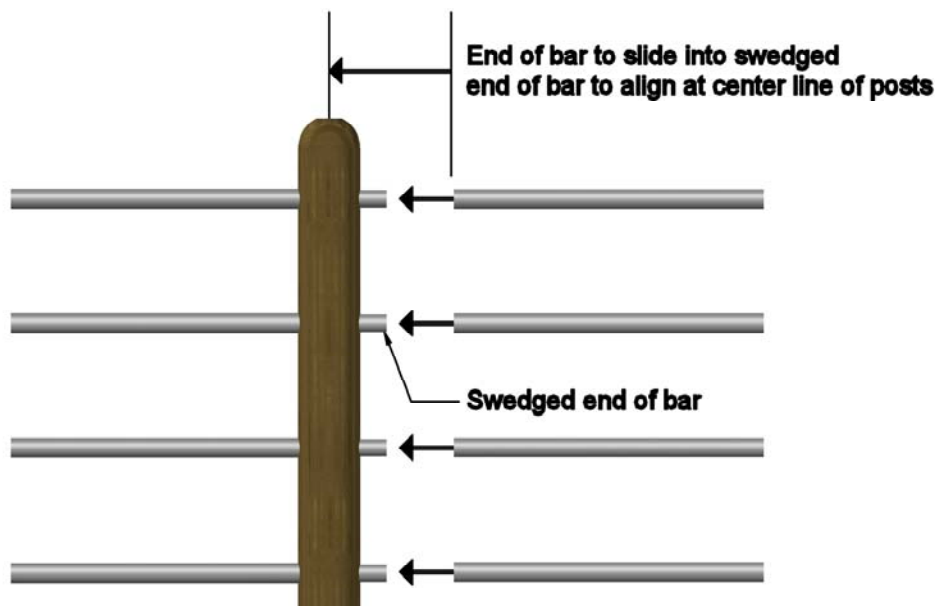
## DETAIL "A"

# RUNNING BARS THROUGH POSTS

( Use String Lines in order to maintain a level line of site to place posts with holes )



## SIDE VIEW



## DETAIL "B"