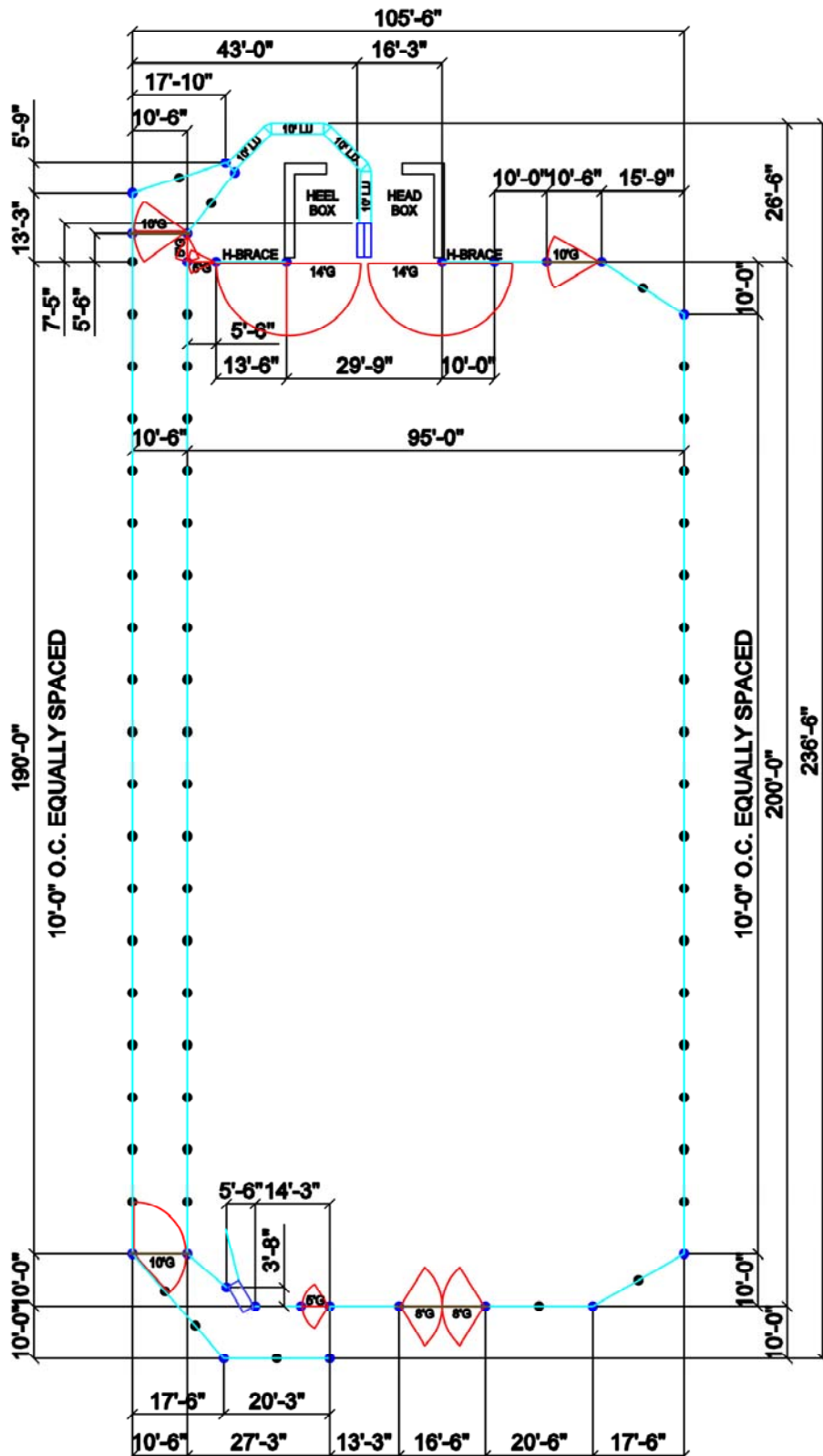


***RED RIVER ARENAS.com***

***“Spend Less, Get More!”***

***800-343-1026***

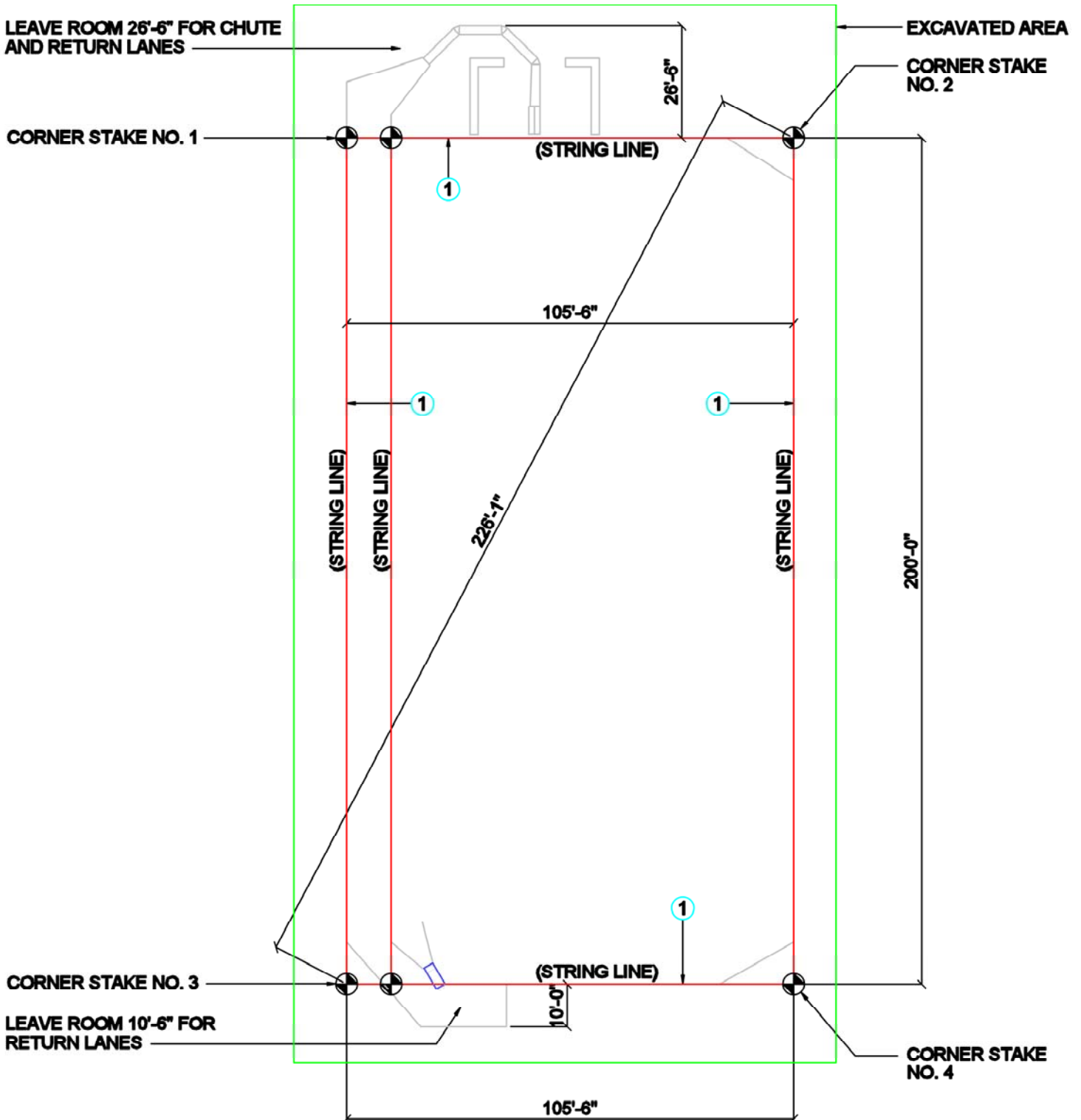
# 100 X 200 TEAM ROPER PRO DIMENSION LAYOUT



# 100 X 200 TEAM ROPER PRO EXCAVATION AREA

MINIMUM EXCAVATION AREA IS 105'-6" BY 226'-6"

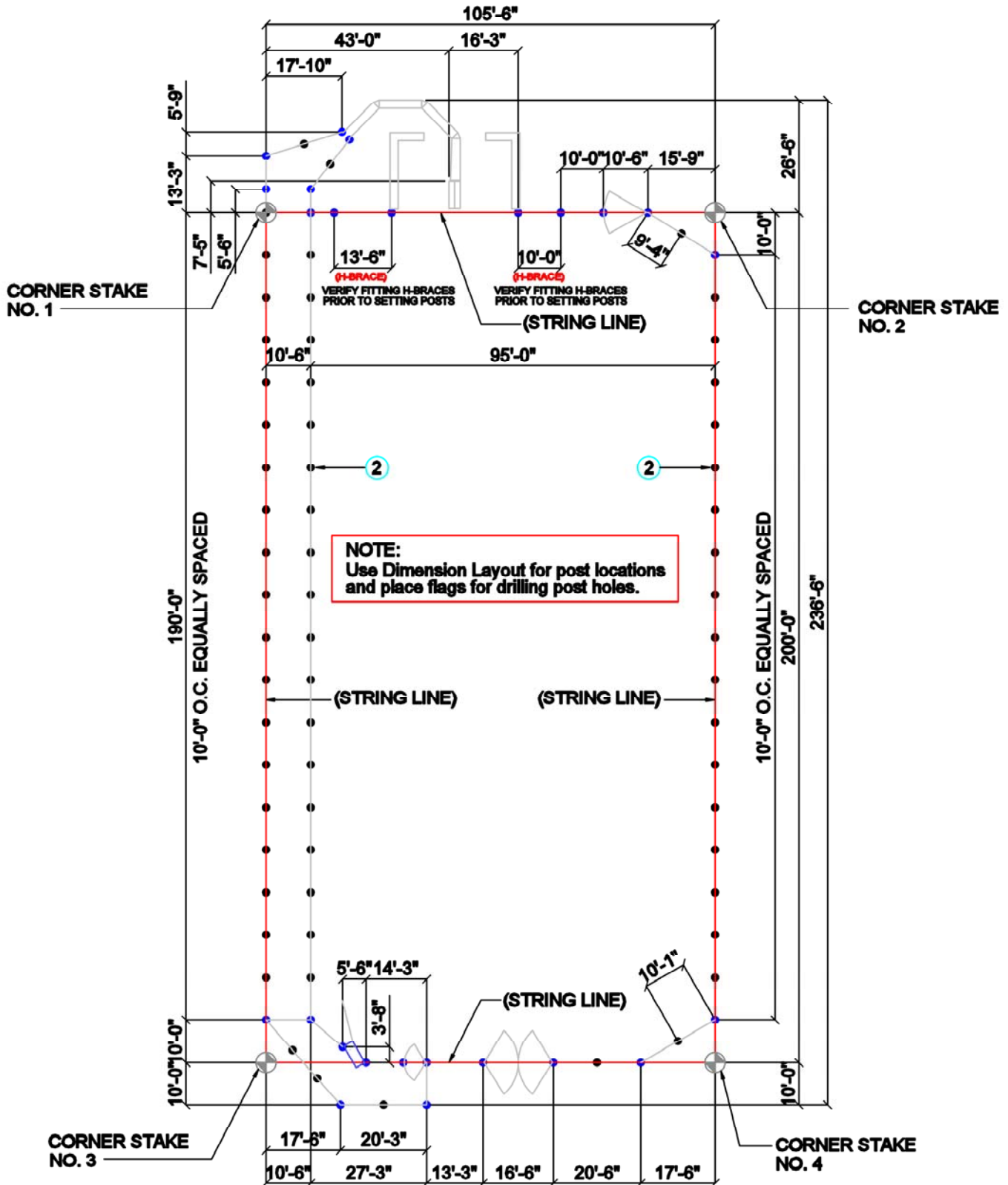
- 1 Start by staking out the Arena (105'-6" x 200'-0") using a string line.



# 100 X 200 TEAM ROPER PRO FLAG POST LOCATIONS

(PLACE A FLAG FOR EACH POST ALONG THE STRING LINE)

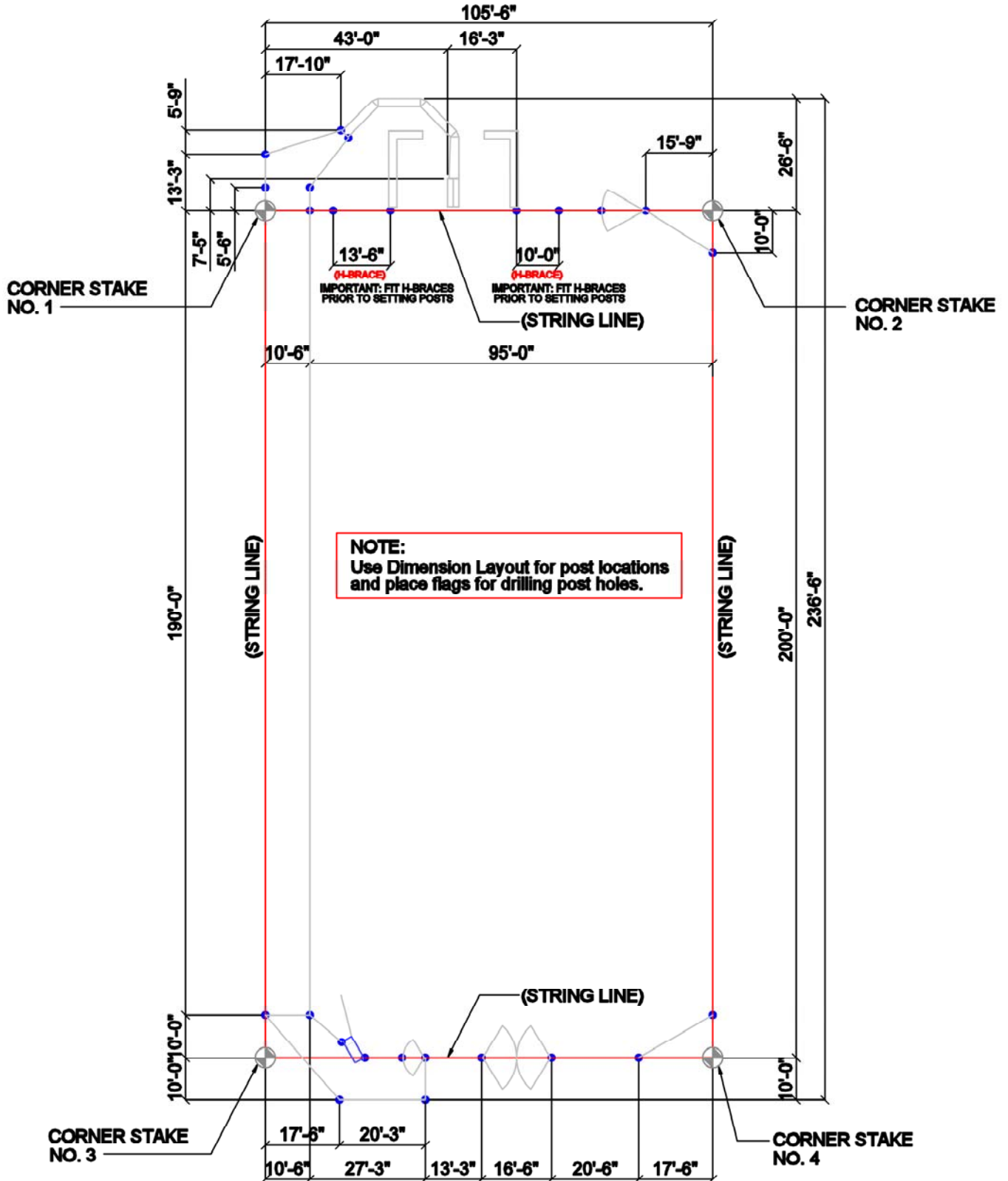
- Using the Dimension Layout. Use flags or stakes to locate drill locations for all posts. Once you have all your post flags staked out, begin drilling the holes. (Posts should be at a min. of 2'-6" below grade.)



# 100 X 200 TEAM ROPER PRO SETTING POSTS w/ NO HOLES

(SET AND CONCRETE ONLY THE POSTS WITH NO HOLES AT THIS TIME)

- Place and concrete only the posts with no holes at this time. Once you have all your post flags staked out, begin drilling the holes. (Posts should be set at a min. of 2'-6" below grade.)

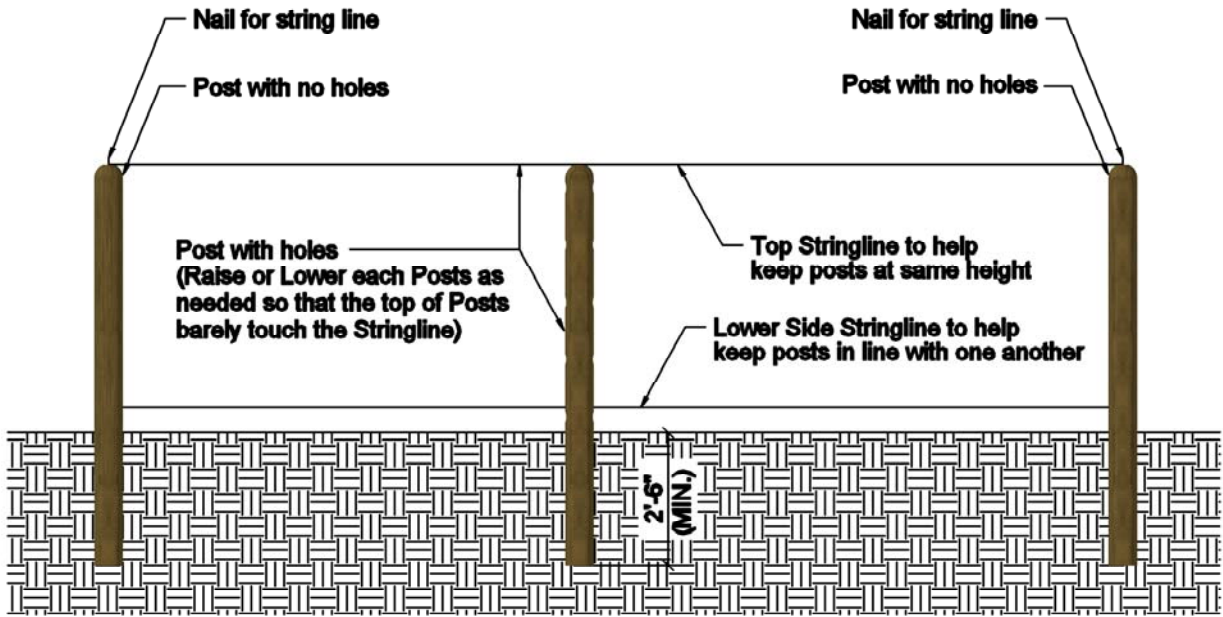




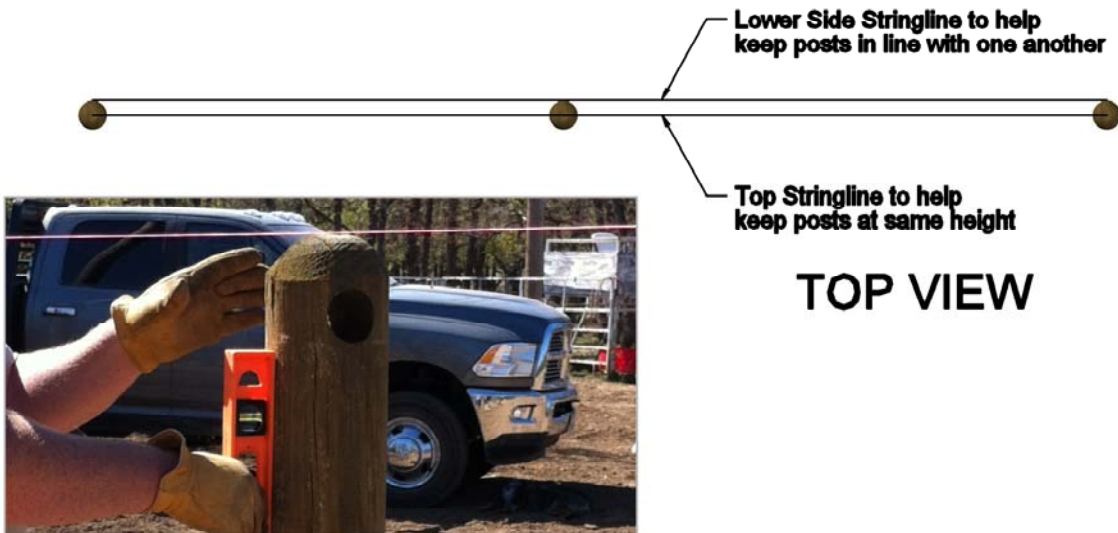


# SETTING POSTS W/ HOLES

(Use String Lines in order to maintain a level line of site to place posts with holes)  
(Posts should be at a min. of 2'-6" below grade.)



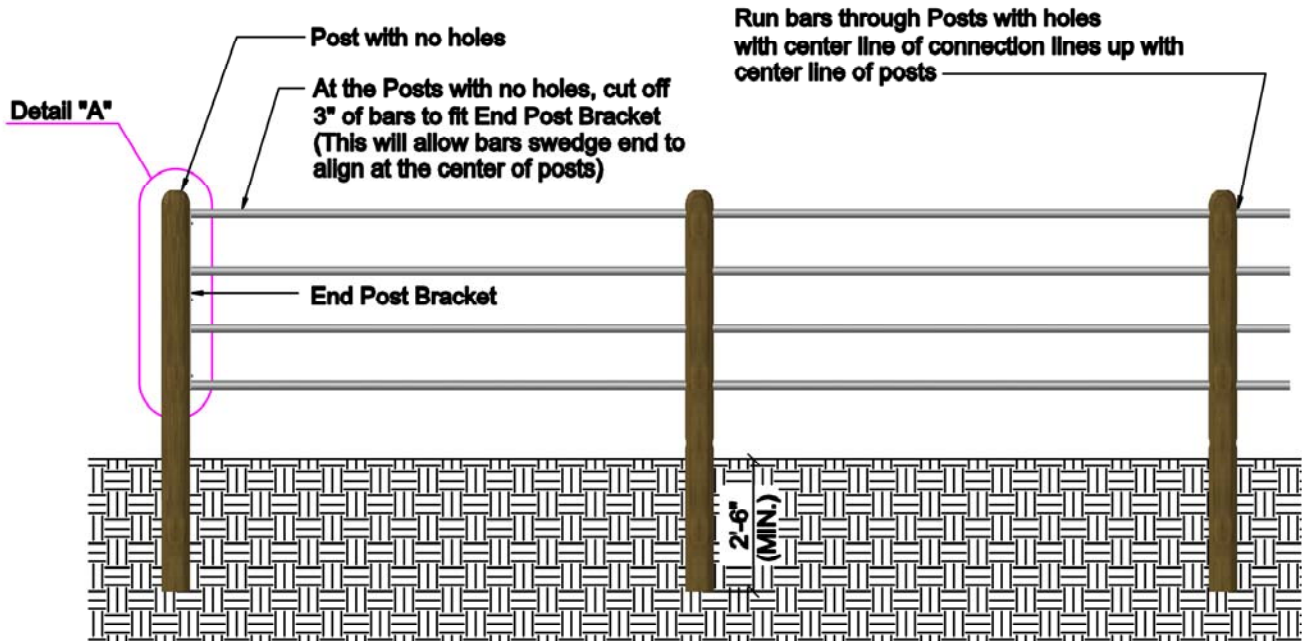
**SIDE VIEW**



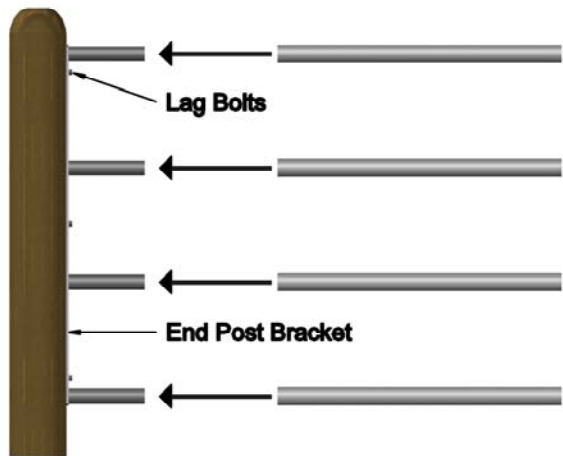
**TOP VIEW**

# END BRACKETS

( Use String Lines in order to maintain a level line of site to place posts with holes )



## SIDE VIEW



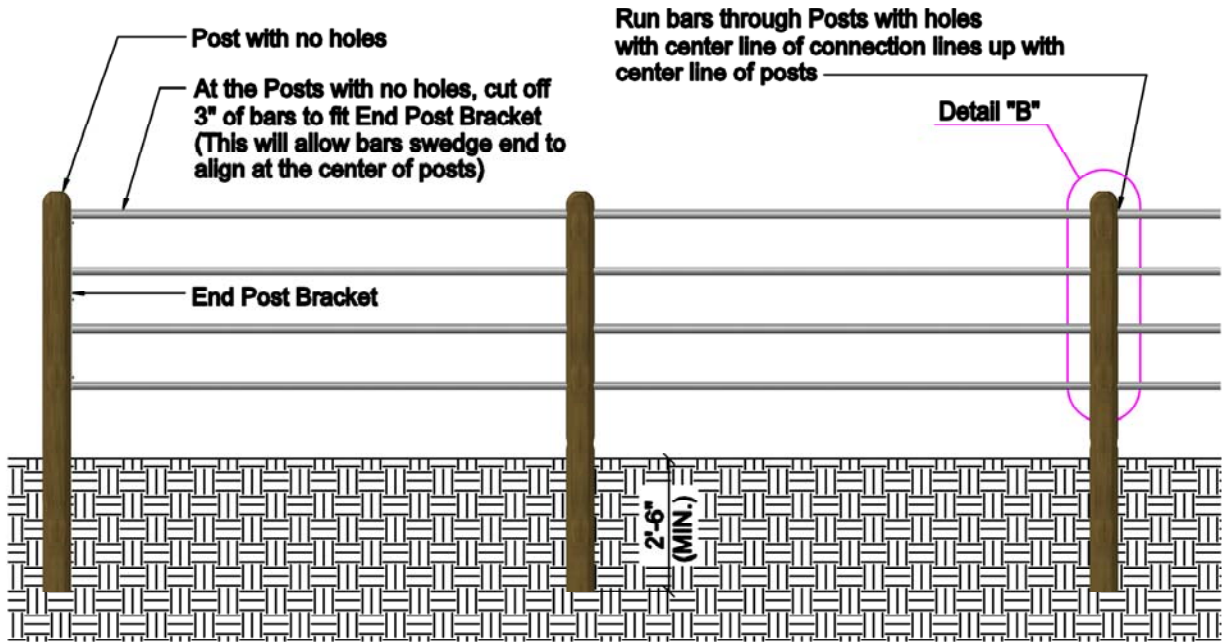
## DETAIL "A"

**NOTE: INFORMATION PURPOSES ONLY  
YOUR NUMBER OF BARS MAY VARY**

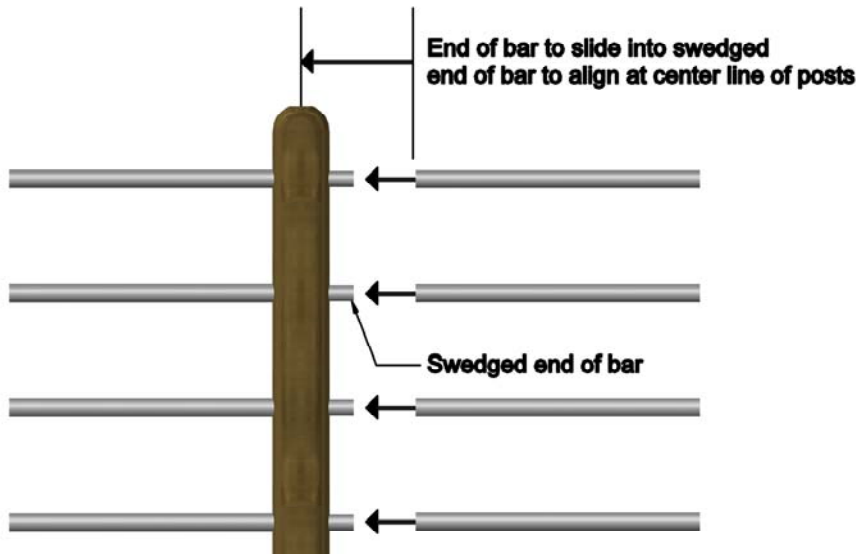


# RUNNING BARS THROUGH POSTS

( Use String Lines in order to maintain a level line of site to place posts with holes )



## SIDE VIEW



## DETAIL "B"

**NOTE: INFORMATION PURPOSES ONLY  
YOUR NUMBER OF BARS MAY VARY**