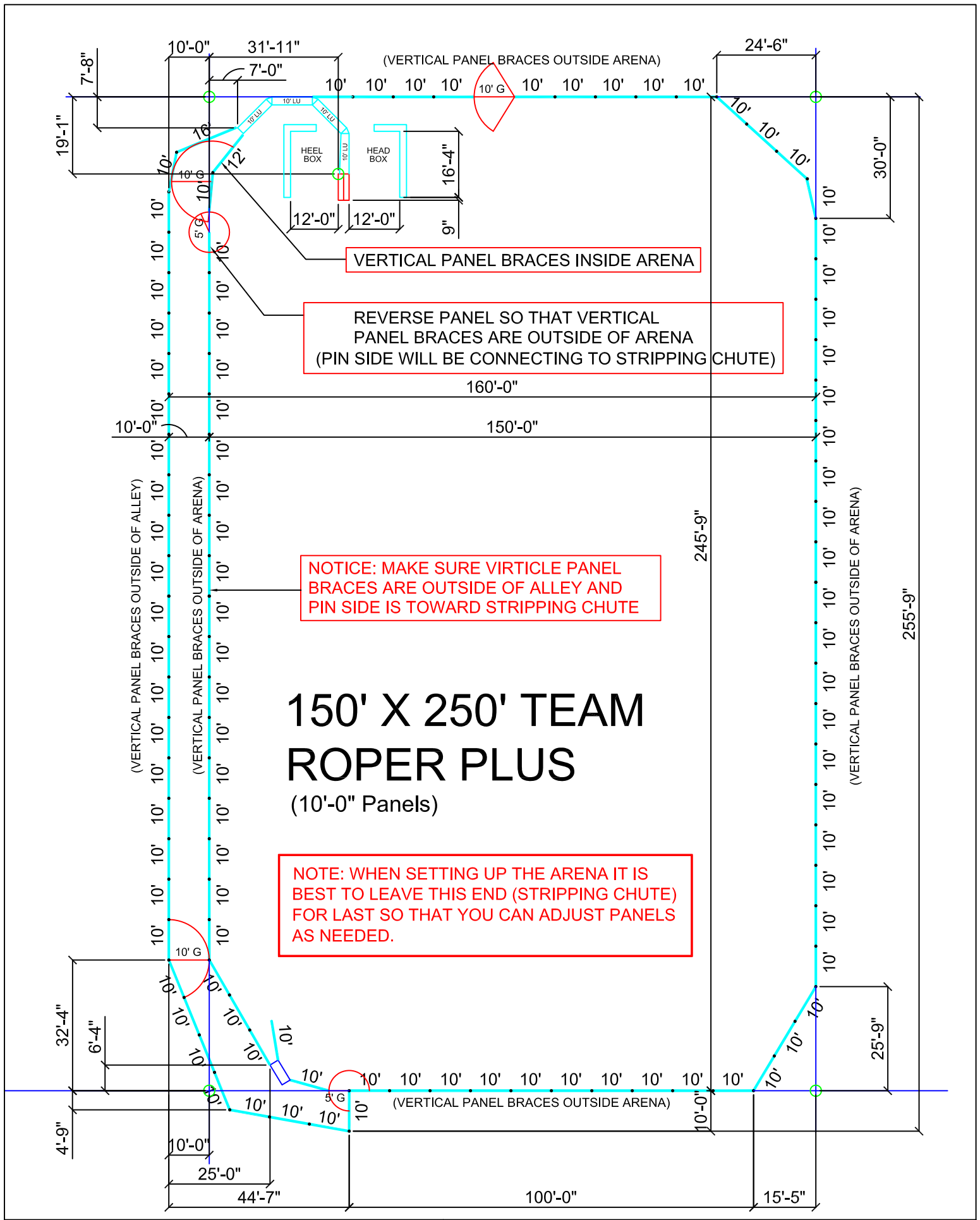


RED RIVER ARENAS.com

“Spend Less, Get More!”

800-343-1026



VERTICAL PANEL BRACES INSIDE ARENA

REVERSE PANEL SO THAT VERTICAL PANEL BRACES ARE OUTSIDE OF ARENA (PIN SIDE WILL BE CONNECTING TO STRIPPING CHUTE)

NOTICE: MAKE SURE VIRTICLE PANEL BRACES ARE OUTSIDE OF ALLEY AND PIN SIDE IS TOWARD STRIPPING CHUTE

150' X 250' TEAM ROPER PLUS

(10'-0" Panels)

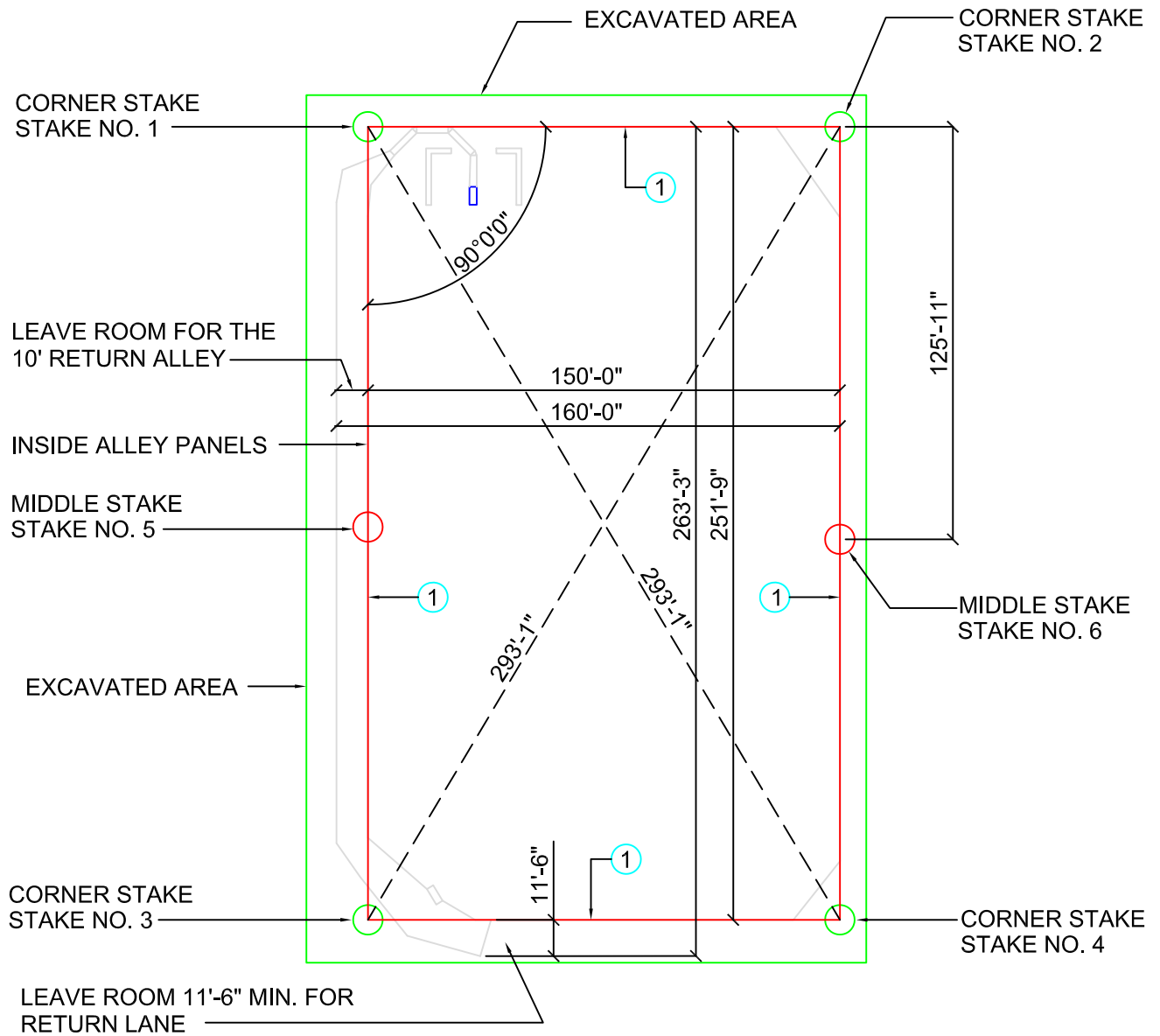
NOTE: WHEN SETTING UP THE ARENA IT IS BEST TO LEAVE THIS END (STRIPPING CHUTE) FOR LAST SO THAT YOU CAN ADJUST PANELS AS NEEDED.

150' X 250' TEAM ROPER PLUS EXCAVATION AREA

MINIMUM EXCAVATION AREA IS 160'-0" BY 263'-3"

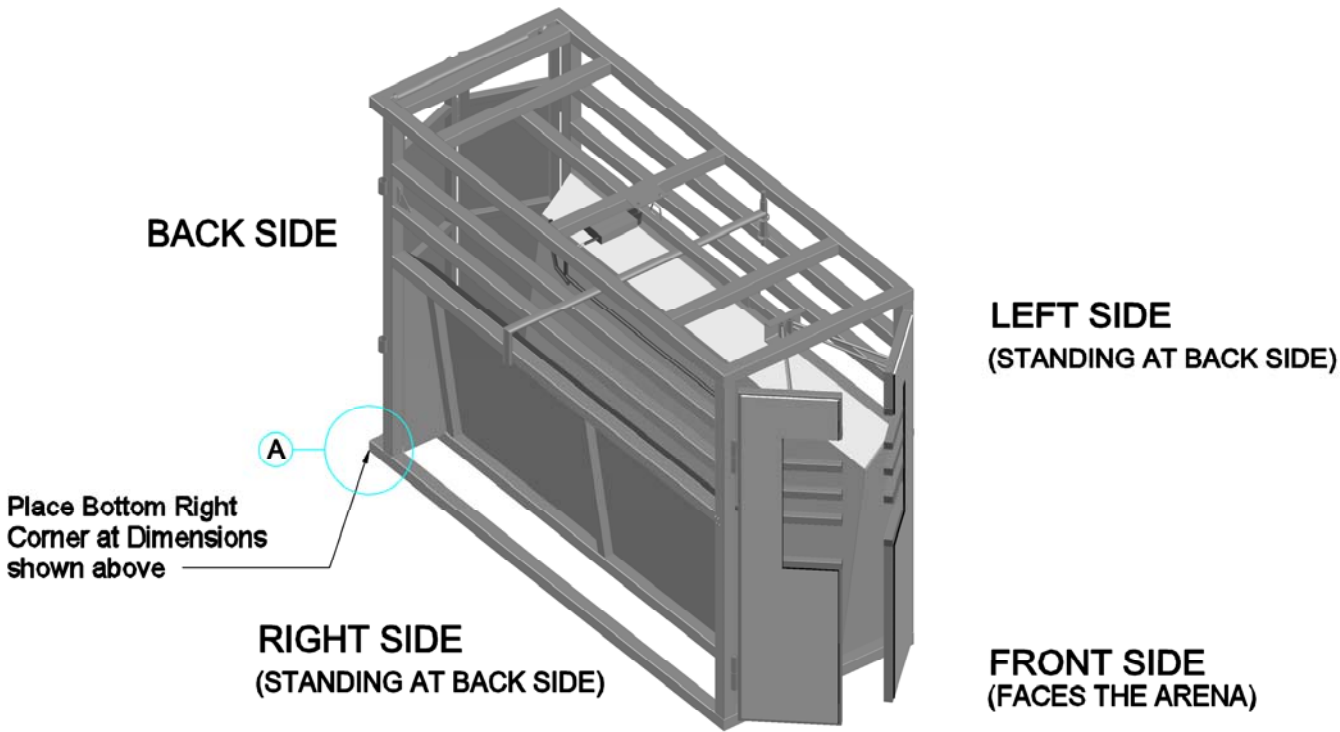
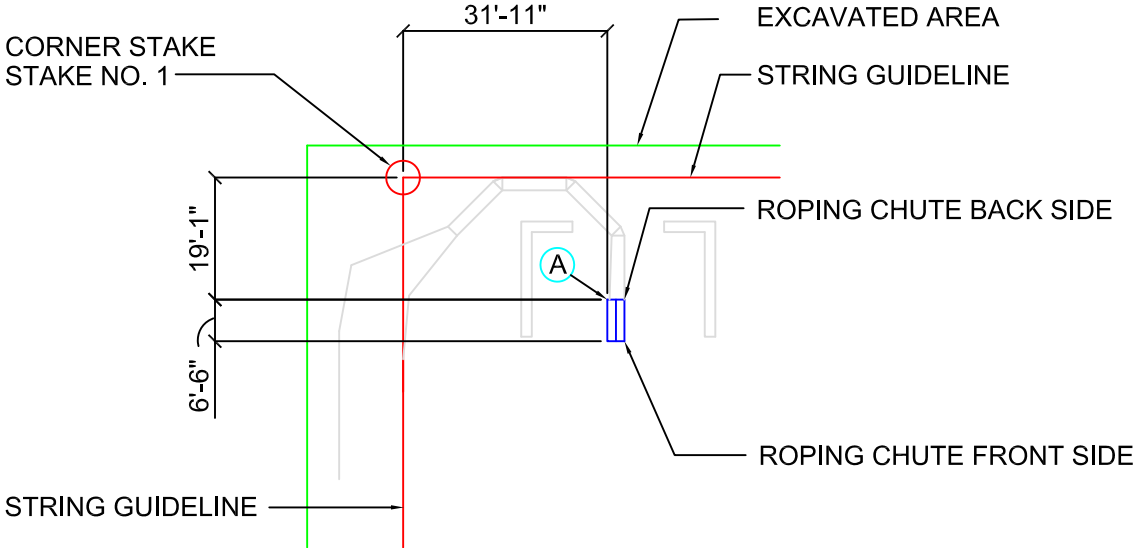
- 1 Start by staking out the Arena Area (150'-0" by 251'-9") to use as a guideline for panels.

NOTE: IF EXCAVATION EXCEEDS THE GIVEN DIMENSIONS OWNER
WILL NEED TO COMPENSATE ACCORDINGLY



150' X 250' TEAM ROPER PLUS ROPING CHUTE LOCATION

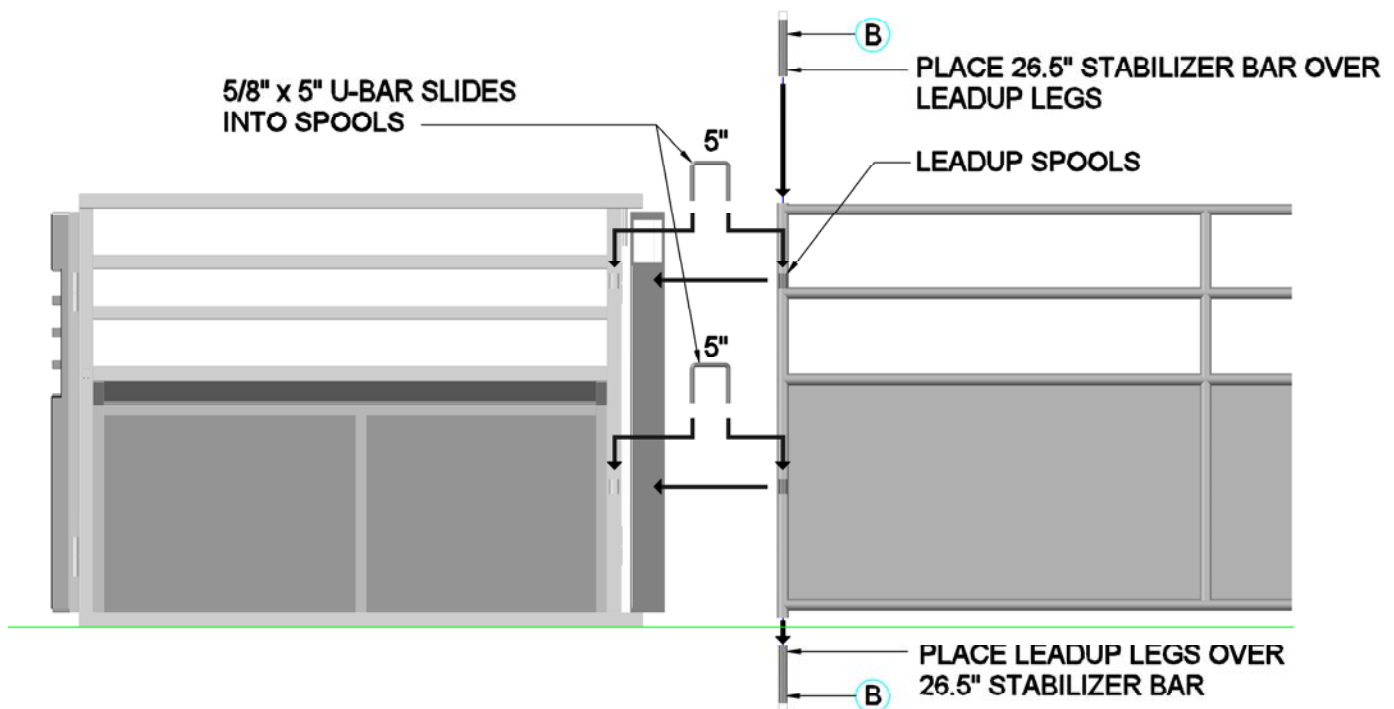
② Position the BACK Corner (A) of the Roping Chute at the dimension shown below:



LEADUP TO CHUTE CONNECTION

- 1.) Place 26.5" STABILIZER BAR (B) on ground and place LEADUP Leg over the STABILIZER BAR for support.
- 2.) Slide 5/8" x 5" U-BARS into CHUTE and LEADUP spools.
- 3.) Place 26.5" STABILIZER BAR (B) over top LEADUP Leg for support.

NOTE: ROPING CHUTE LEFT SIDE AND LEADUP PANEL SHOULD LINE UP WITH ONE ANOTHER.



ROPING CHUTE LEFT SIDE

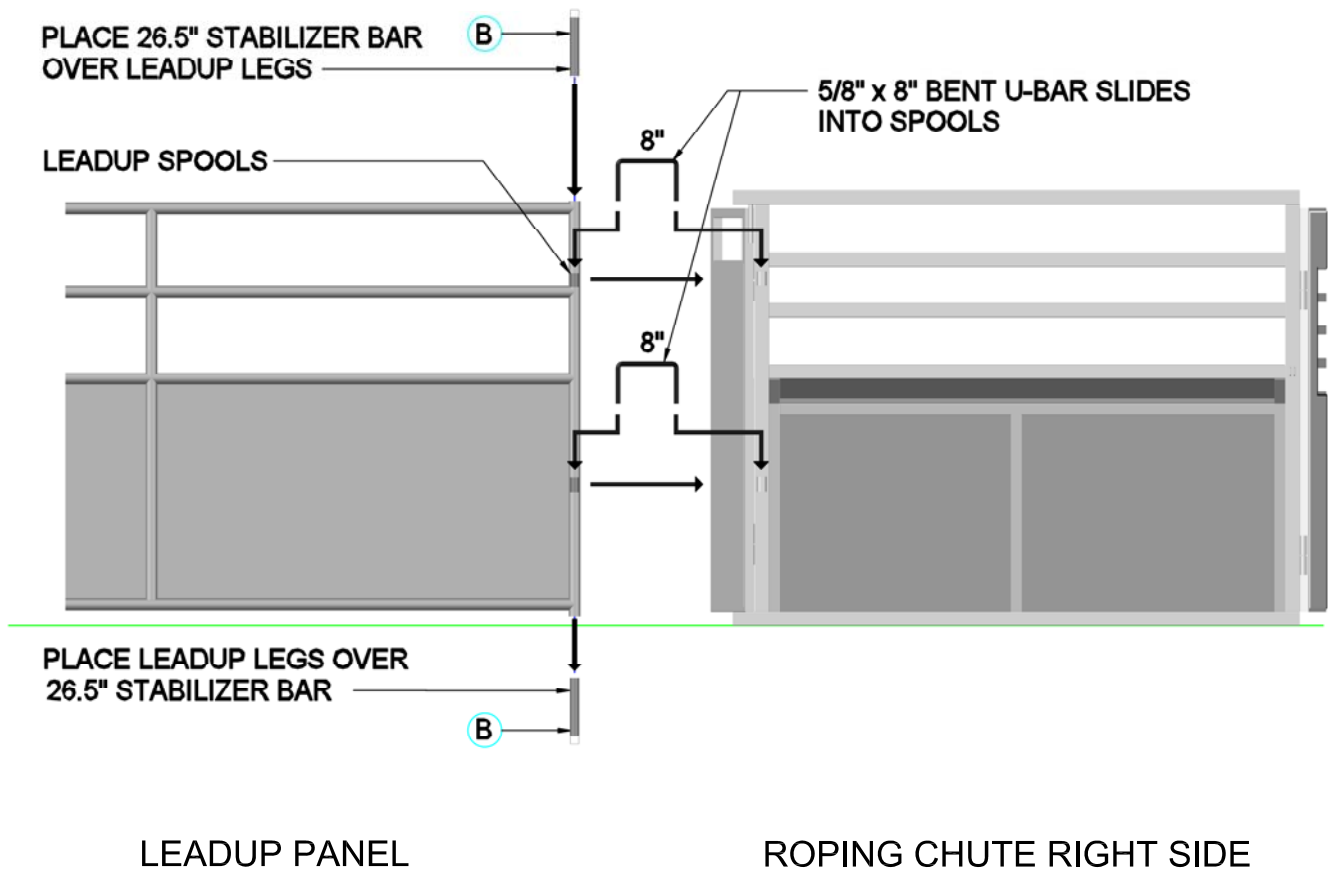
LEADUP PANEL

STANDING BEHIND THE CHUTE
LEADUP TO LEFT SIDE CHUTE CONNECTION w/ 5" U-BARS

CHUTE TO LEADUP CONNECTION

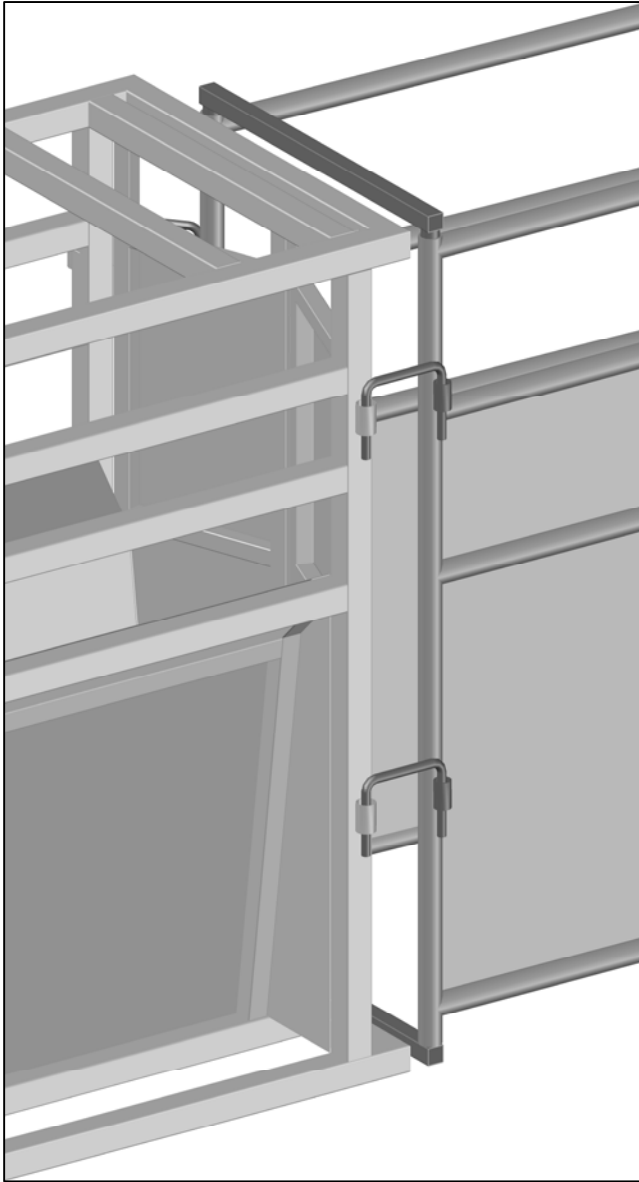
- 1.) Place LEADUP Leg over the STABILIZER (B) BAR for support.
- 2.) Slide 5/8" x 8" BENT U-BARS into CHUTE and LEADUP spools.
- 3.) Place 26.5" STABILIZER BAR (B) over top LEADUP Leg for support.

NOTE: ROPING CHUTE LEFT SIDE AND LEADUP PANEL SHOULD LINE UP WITH ONE ANOTHER.

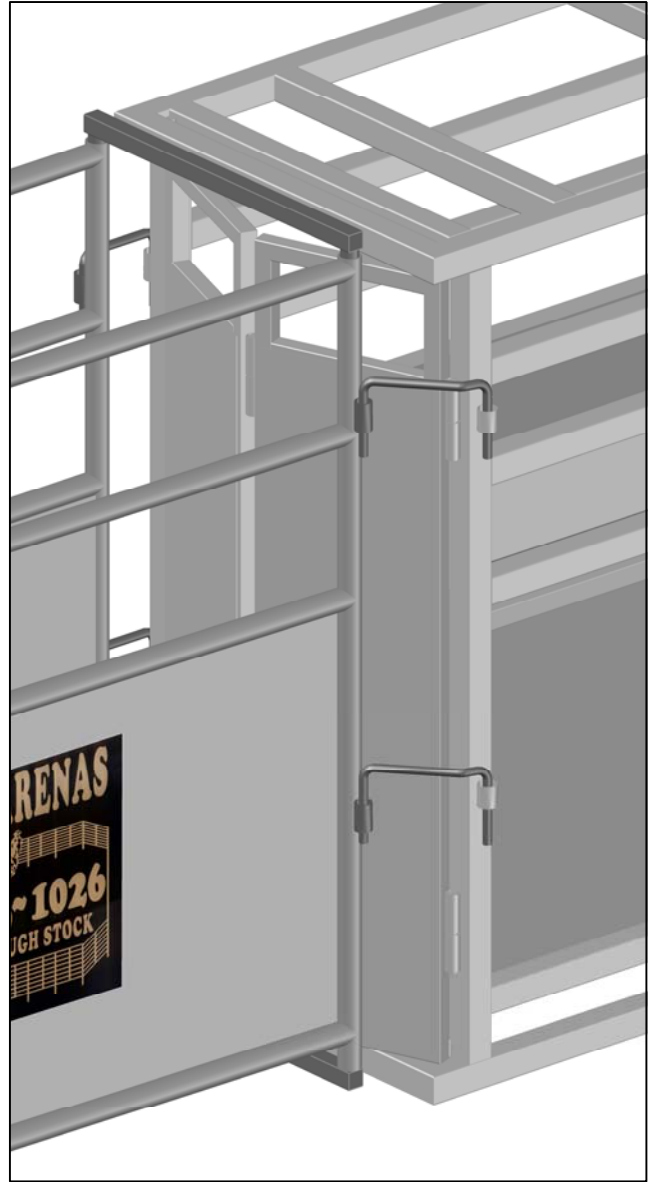


STANDING BEHIND THE CHUTE
LEADUP TO RIGHT SIDE CHUTE CONNECTION w/ 8" U-BARS

LEADUP TO CHUTE CONNECTION



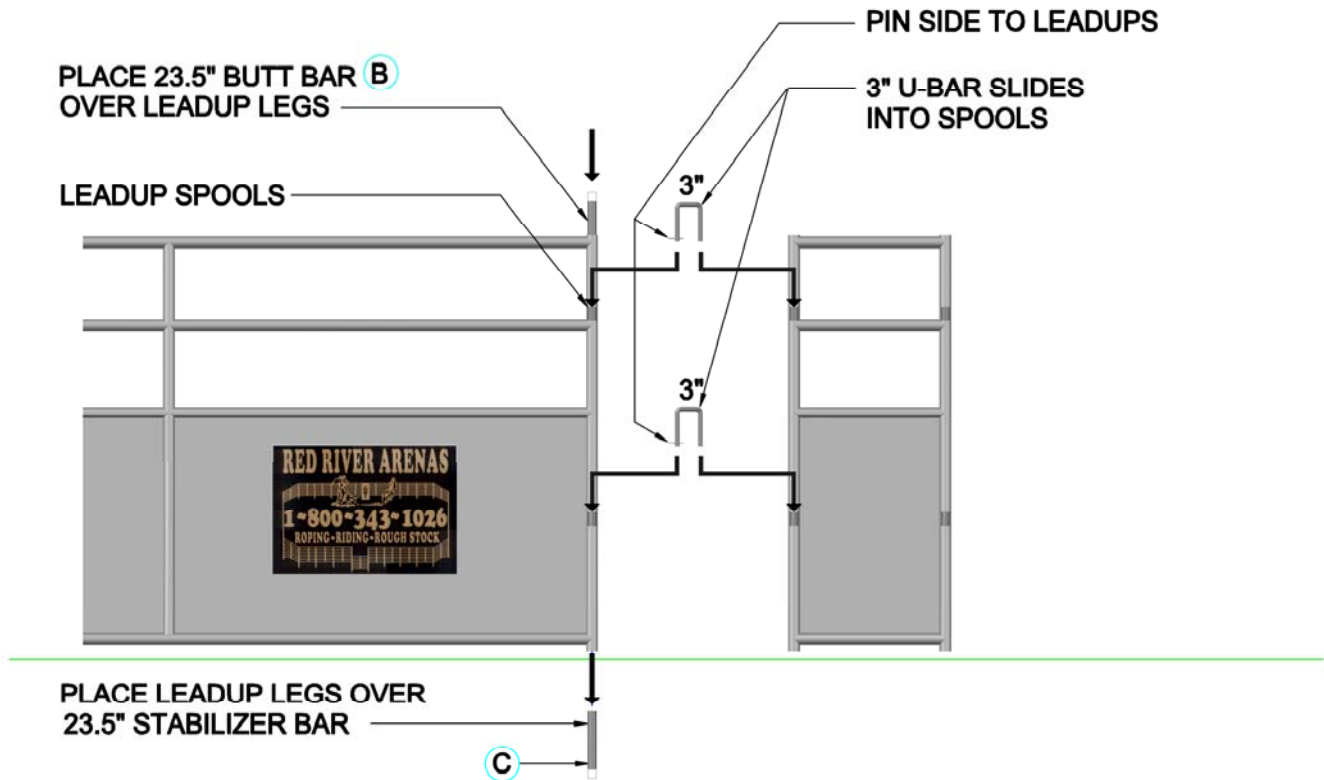
ROPING CHUTE LEFT SIDE
(5/8" x 5" U-BAR)



ROPING CHUTE RIGHT SIDE
(5/8" x 8" BENT U-BAR)

STANDING BEHIND CHUTE
LEFT AND RIGHT LEADUP TO CHUTE U-BAR CONNECTIONS

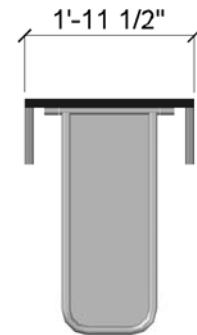
10' LEADUP TO 2' FT LEADUP CONNECTION (ROPING CHUTE LEFT SIDE)



LEADUP PANEL

2 FT. LEADUP

STANDING BEHIND CHUTE
LEFT SIDE LEADUP TO 2' FT. LEADUP CONNECTION

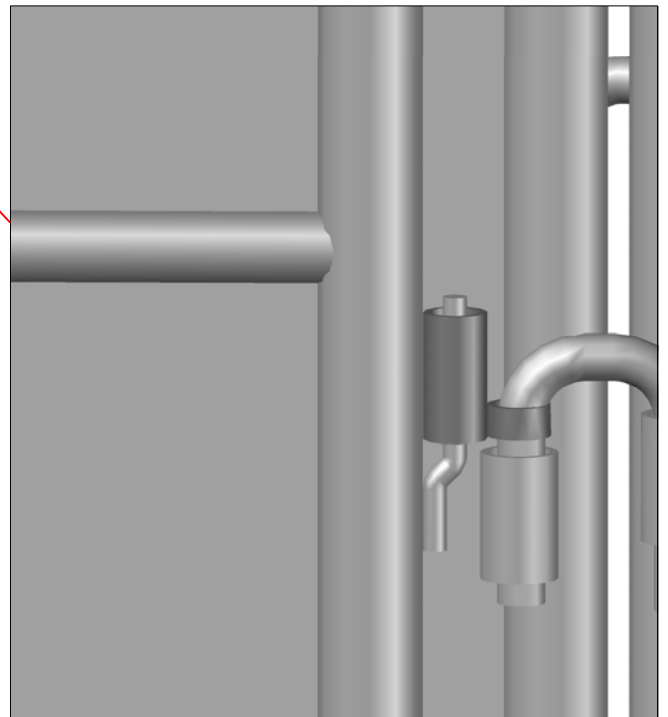
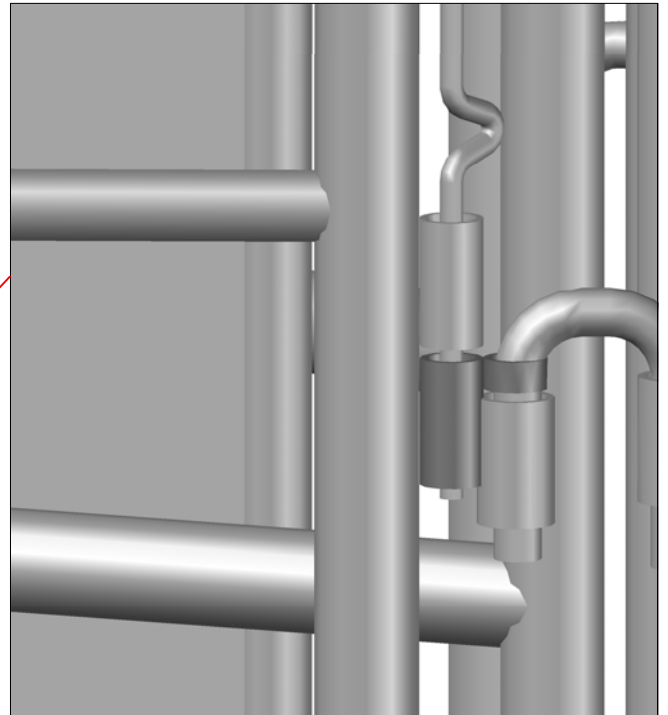
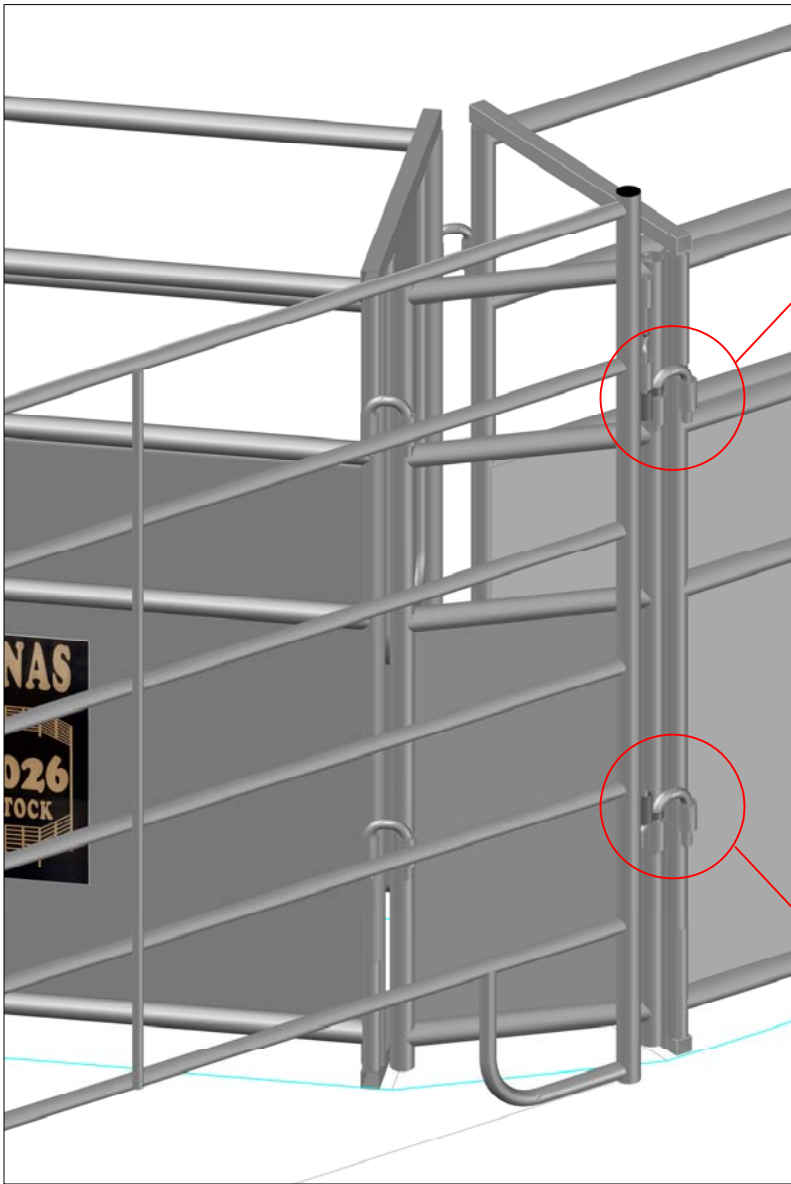


B 23.5" BUTT BAR

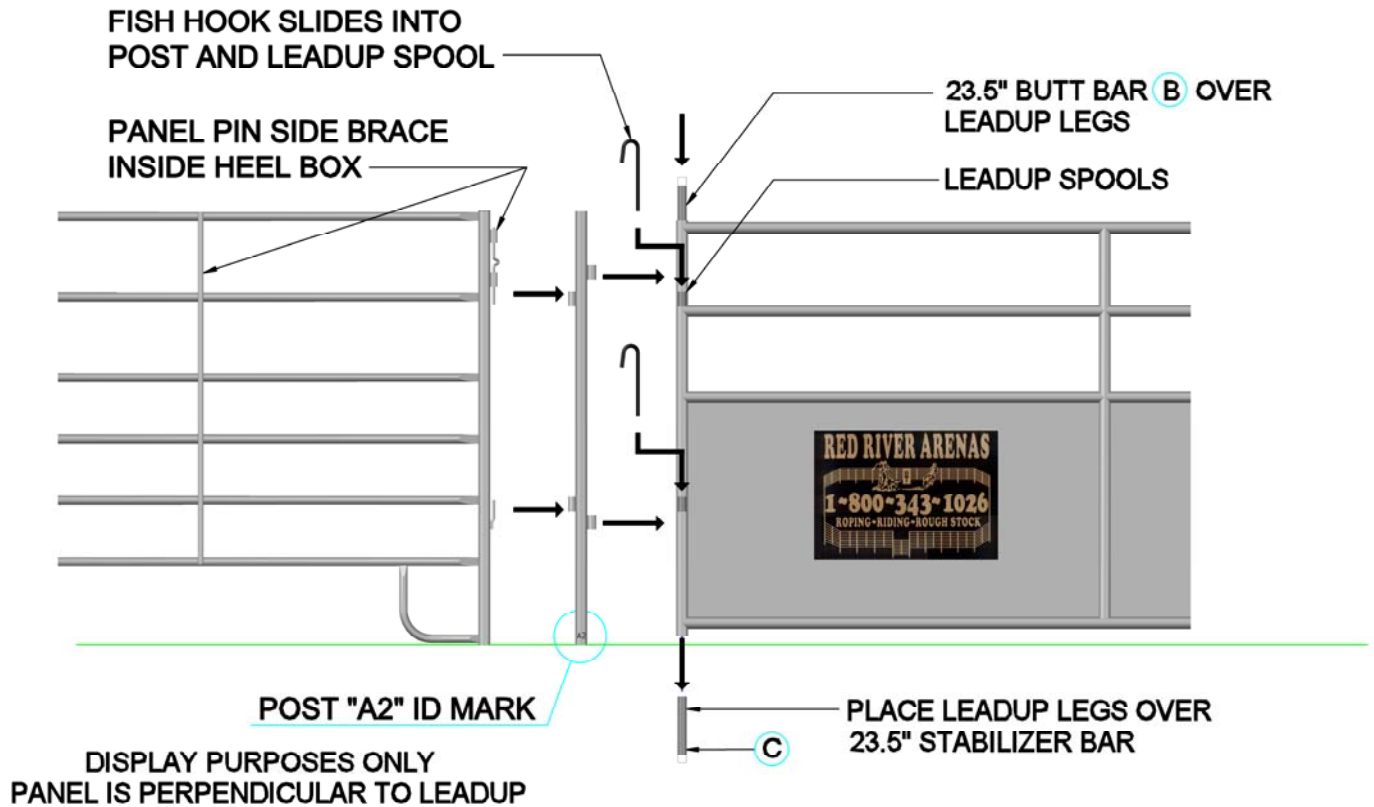


C 23.5" STABILIZER BAR

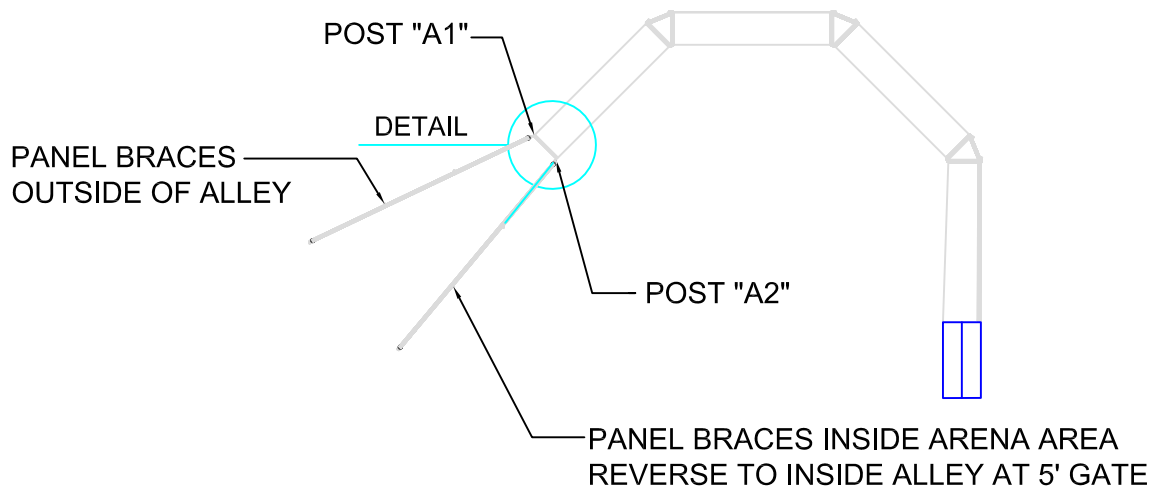
PANEL TO LEADUP 3-WAY CONNECTION



PANEL TO LEADUP CONNECTION (END OF LEADUPS)



PANEL POST A2 LEADUP PANEL
PANEL TO END LEADUPS CONNECTION

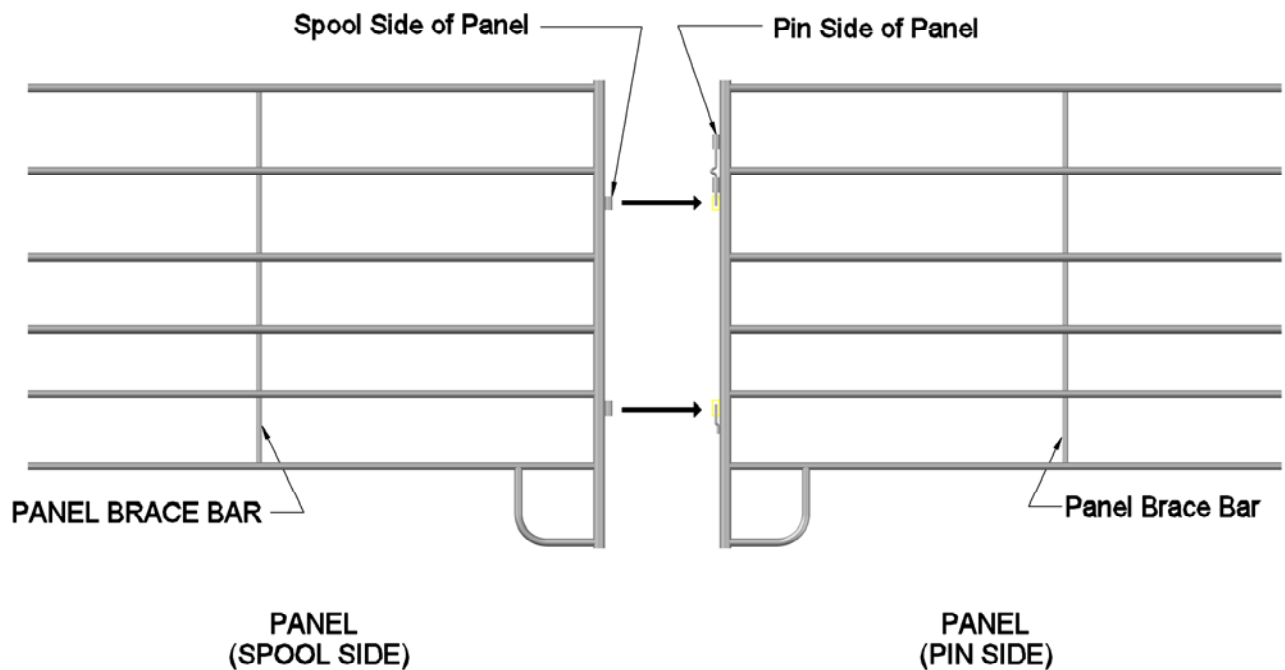


PANEL TO PANEL CONNECTION

(SPOOL TO PIN)

SPOOL TO PIN PANEL CONNECTION

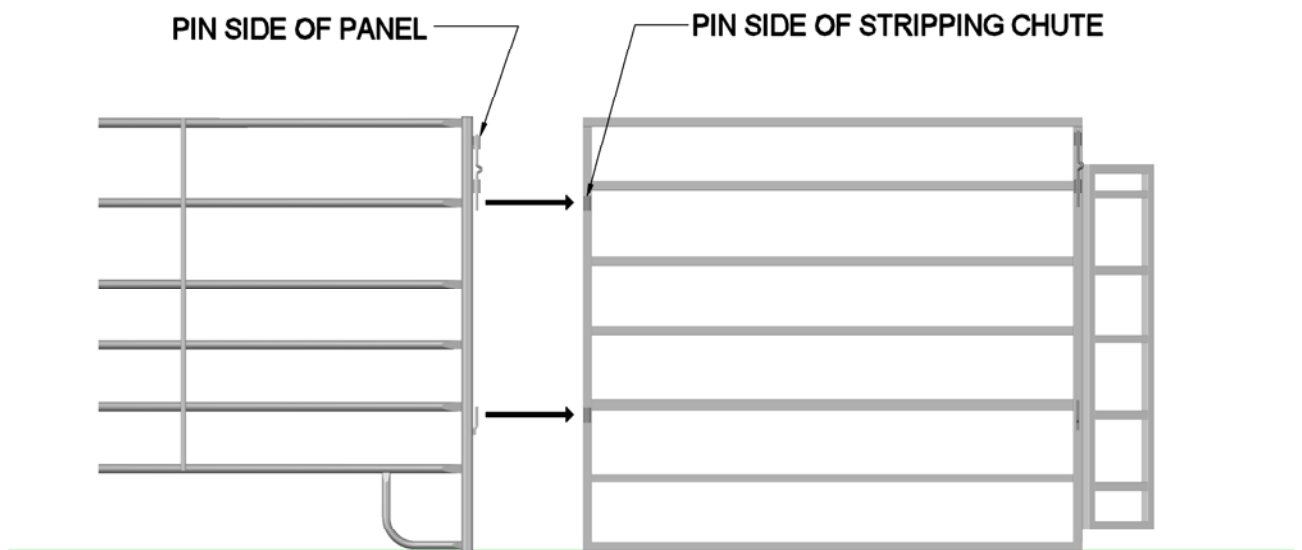
1. SLIGHTLY TILT UNCONNECTED PANEL AND PLACE BOTTOM SPOOL OVER OTHER PANELS BOTTOM PIN.
2. LIFT TOP PIN AND POSITION PANEL SPOOL UNDER PIN SIDE AND RELEASE PIN.
3. PANEL SHOULD NOW BE CONNECTED. YOU CAN ADJUST ONE PANEL 90° FOR BALANCE.



NOTE: WHEN PLACING PANELS - THE PANEL BRACE BAR FACES OUTSIDE OF THE ARENA AREA

SPOOL TO PIN PANEL TO PANEL CONNECTION

PANEL TO STRIPPING CHUTE CONNECTION

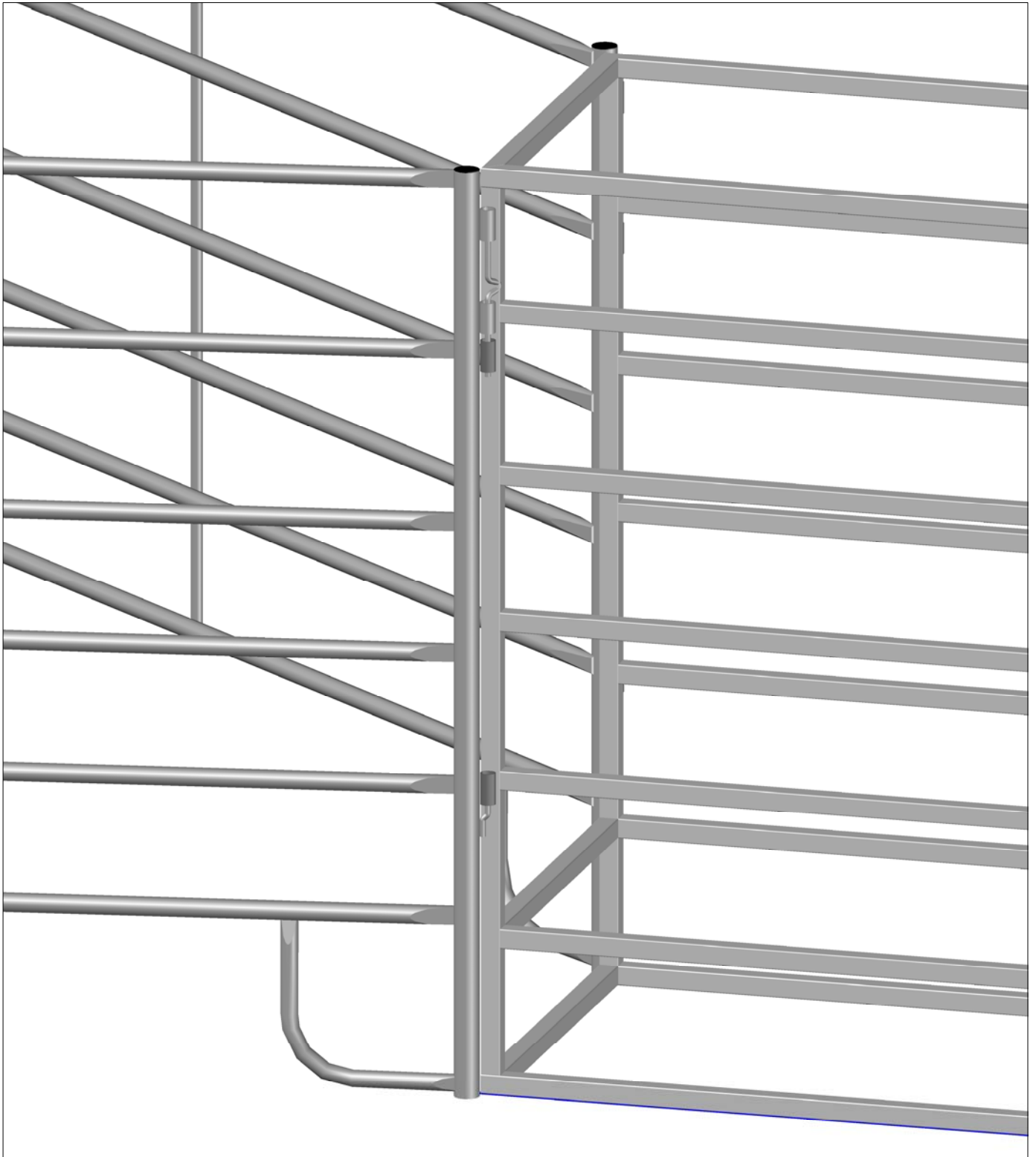


PANEL
(PIN SIDE)

STRIPPING CHUTE

PANEL TO STRIPPING CHUTE CONNECTION

PANEL TO STRIPPING CHUTE



PANEL TO STRIPPING CHUTE CONNECTIONS