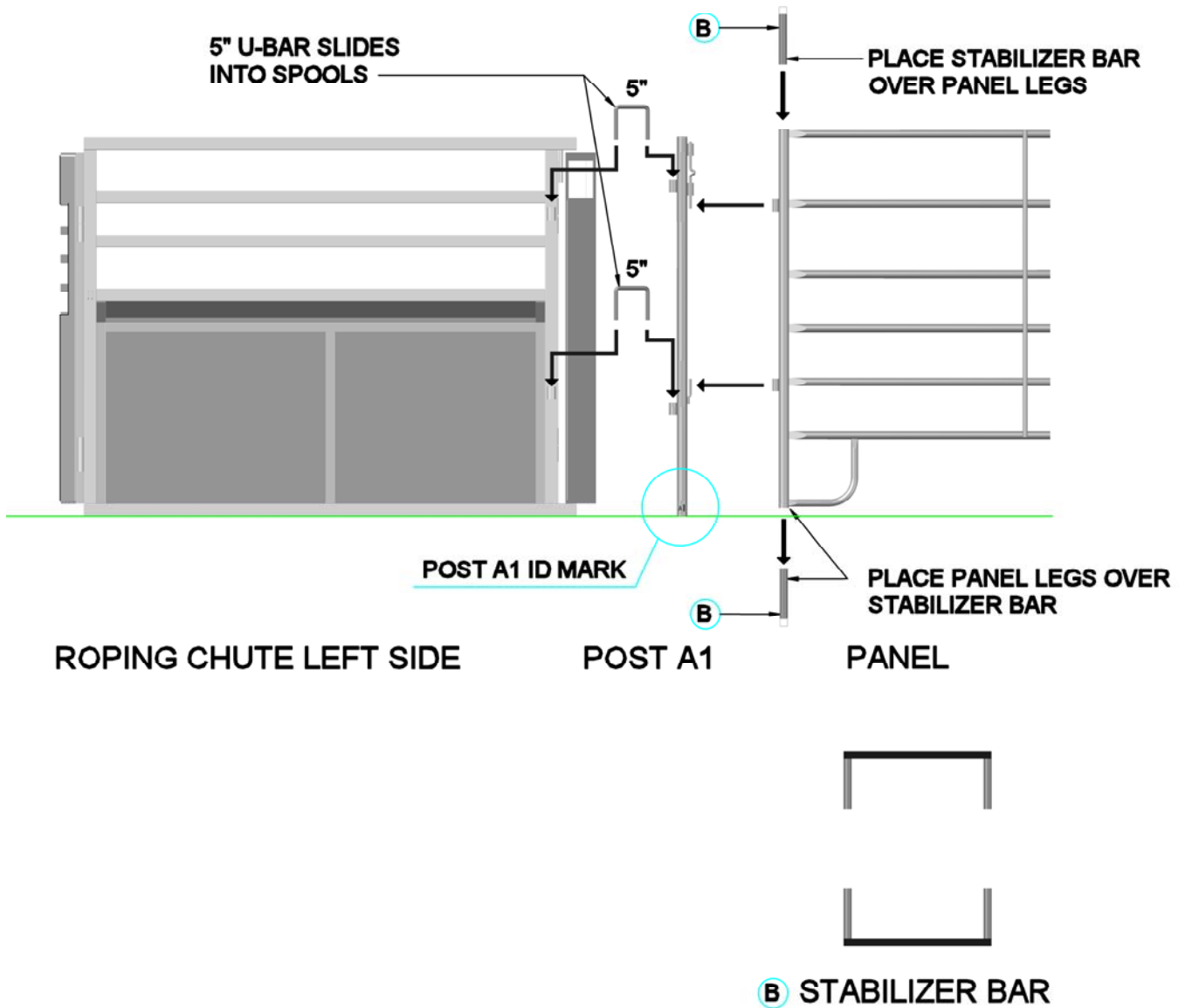


# PANEL TO CHUTE CONNECTION

- 1.) Place STABILIZER BAR (B) on ground and place LEADUP Leg over the STABILIZER BAR for support.
- 2.) Place STABILIZER BAR (B) over top PANEL Leg for support.



STANDING BEHIND THE CHUTE  
PANEL TO LEFT SIDE CHUTE CONNECTION w/ POST A1