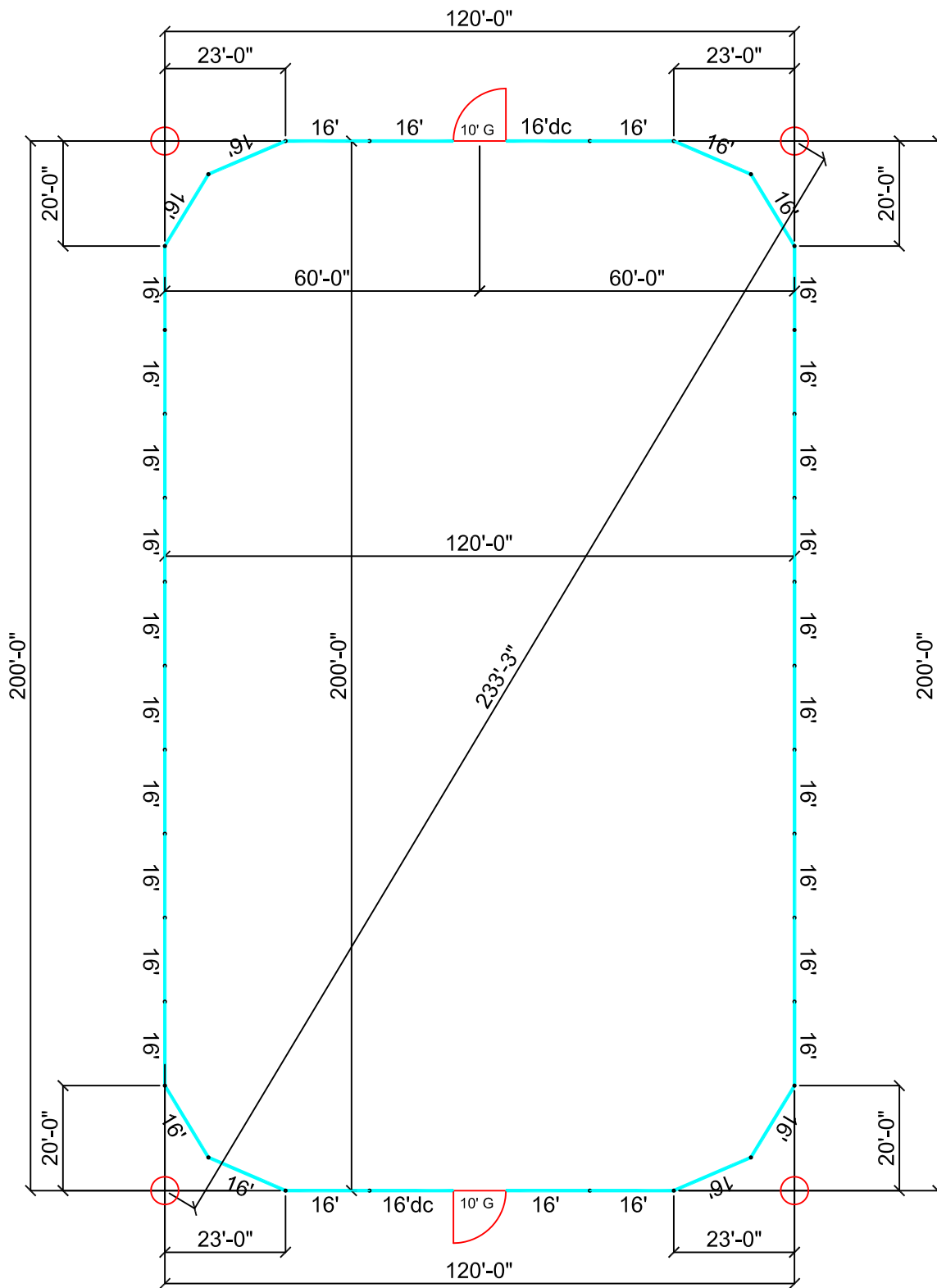


RED RIVER ARENAS.com

“Spend Less, Get More!”

800-343-1026



DIMENSIONS

This drawing is the property of RedRiverArenas.com. RedRiverArenas does not authorize the reproduction or conveyance of any information contained herein without prior written permission.

120' x 200' RIDING ARENA - DIMENSIONS

REDRIVERARENAS.COM

PHONE : 1-325-625-1900

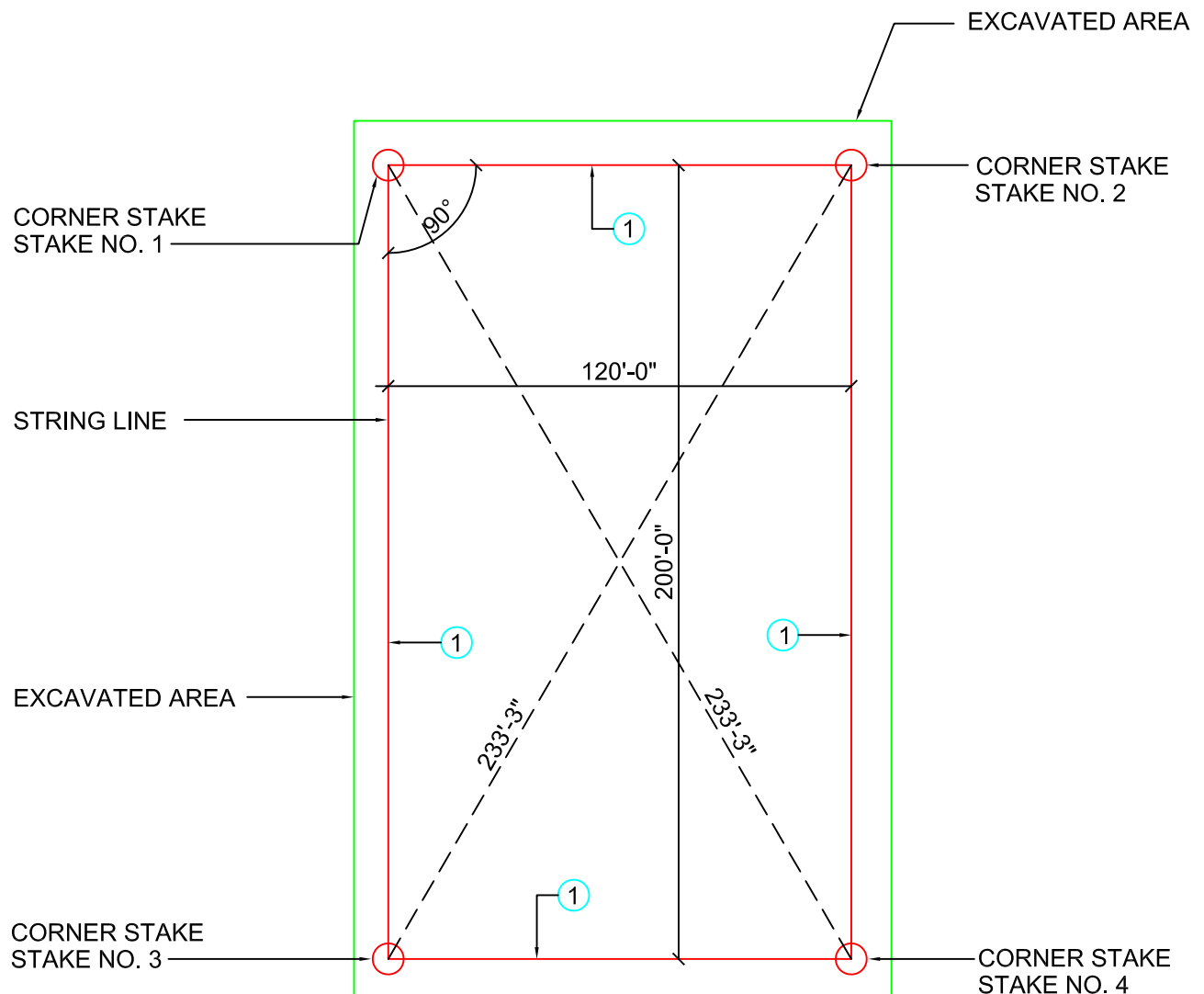
TUBE-16-09-WC

120 X 200 RIDING ARENA EXCAVATION AREA

MINIMUM EXCAVATION AREA IS 120'-0" BY 200'-0"

- 1 Start by staking out the Arena Area (120'-0" by 200'-0") to use as a guideline for panels.

NOTE: IF EXCAVATION EXCEEDS THE GIVEN DIMENSIONS OWNER
WILL NEED TO COMPENSATE ACCORDINGLY

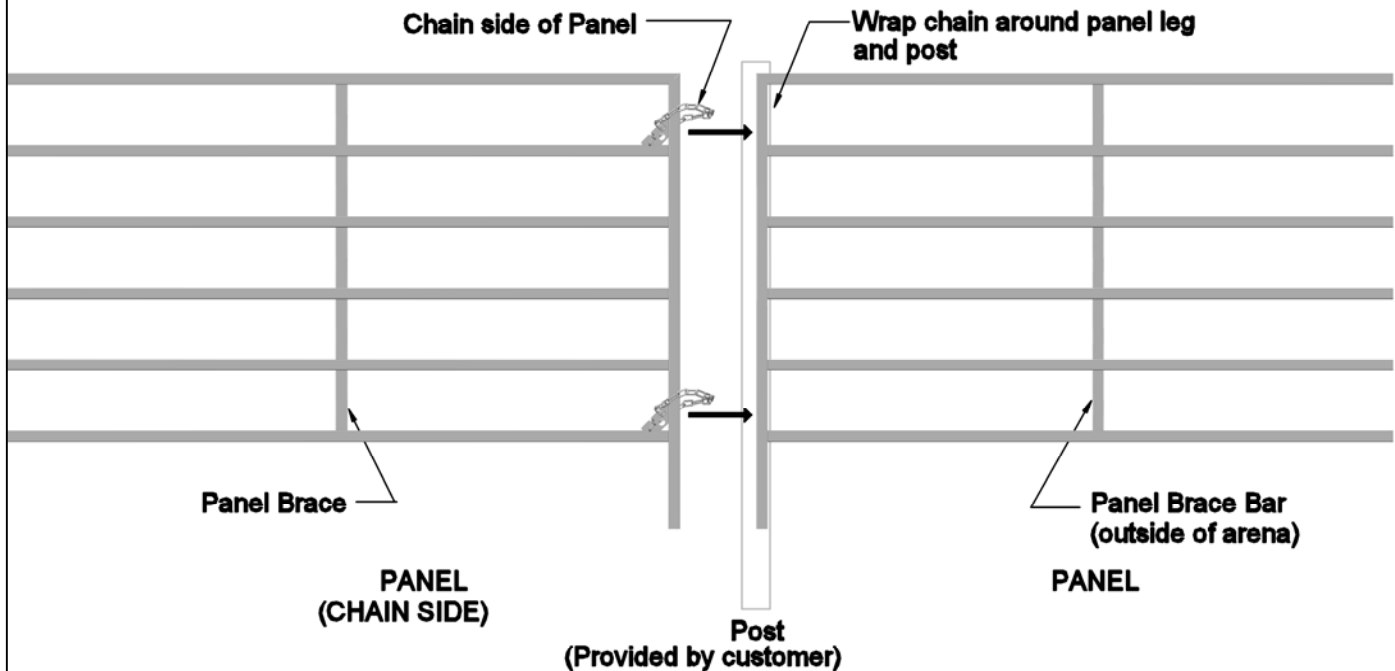


PANEL TO PANEL CONNECTION

(CHAIN CONNECTION)

PANEL CHAIN CONNECTION

1. USING THE MARK(S) YOU MAKE WITH THE STRING. ALIGN AND CONNECT ONE PANEL AT A TIME.
2. WRAP CHAIN AROUND PANEL LEG AND ATTACH TO CHAIN KEEPER.
3. PANL SHOULD NOW BE CONNECTED. YOU CAN ADJUST ONE PANEL 90° FOR BALANCE.



PANEL TO PANEL CONNECTION WITH CHAINS

This drawing is the property of RedRiverArenas.com
RedRiverArenas does not authorize the reproduction or
conveyance of any information contained herein
without prior written permission.

120' x 200' RIDING ARENA - PANEL TO PANEL

REDRIVERARENAS.COM

PHONE : 1-325-625-1900

TUBE-16-09-WC